

How we distribute education funding to schools

Education funding at a glance

Education funding in Alberta comes from the provincial government.

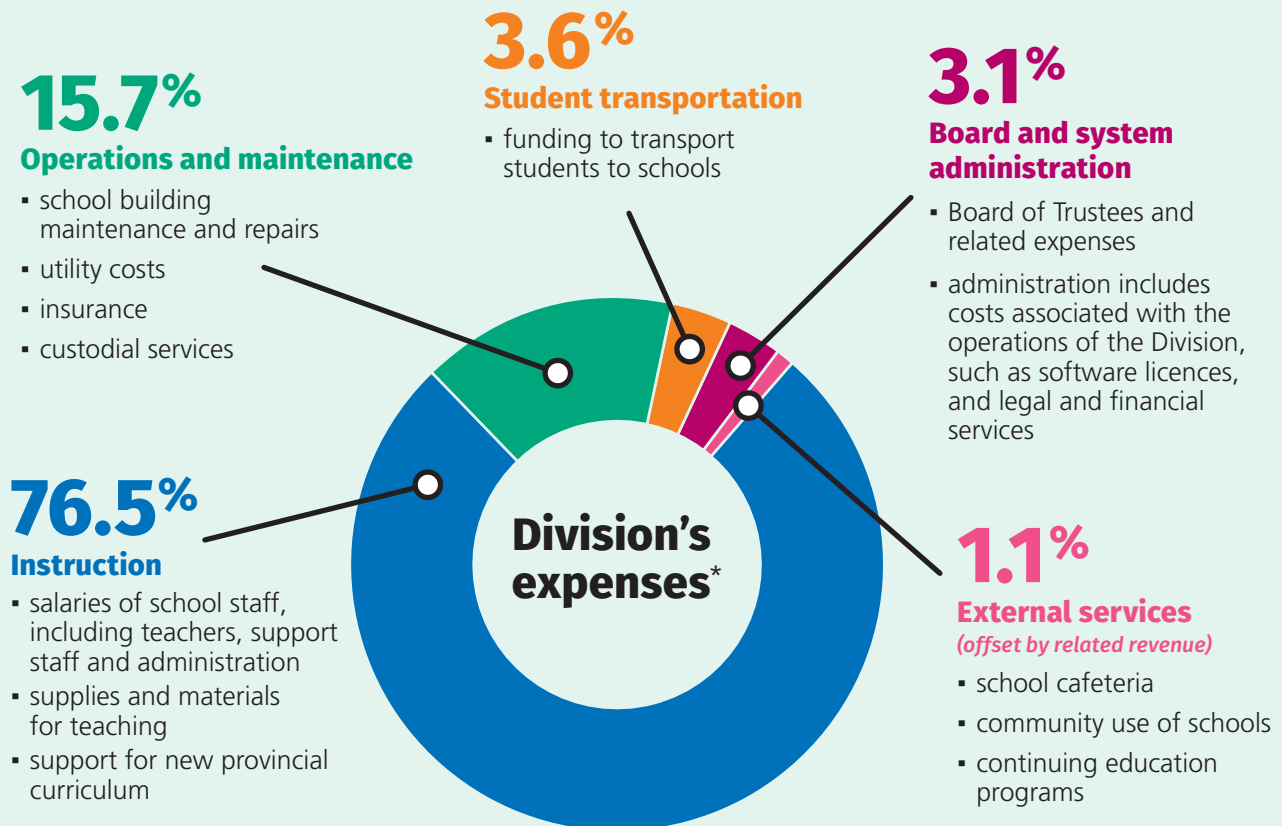
Like every child, each school is *unique*. Edmonton Public Schools distributes the funding to schools based on the number of students, learning needs, and other factors like building operations.

School fees and fundraising



Families may be charged **school fees** for items or services related to enhancing educational experiences. The province's *School Fees Regulation* outlines the types of fees schools can and cannot charge for. School fees make up 2.4% of the total Division's annual revenue.

Many schools **fundraise** for special initiatives or events at a school. Fundraising is carried out with a specific purpose in mind for any funds raised.



*based on 2022-23 budget

How education funding flows to schools

Funding comes from the province, and the Division distributes it to schools based on a number of factors, including:

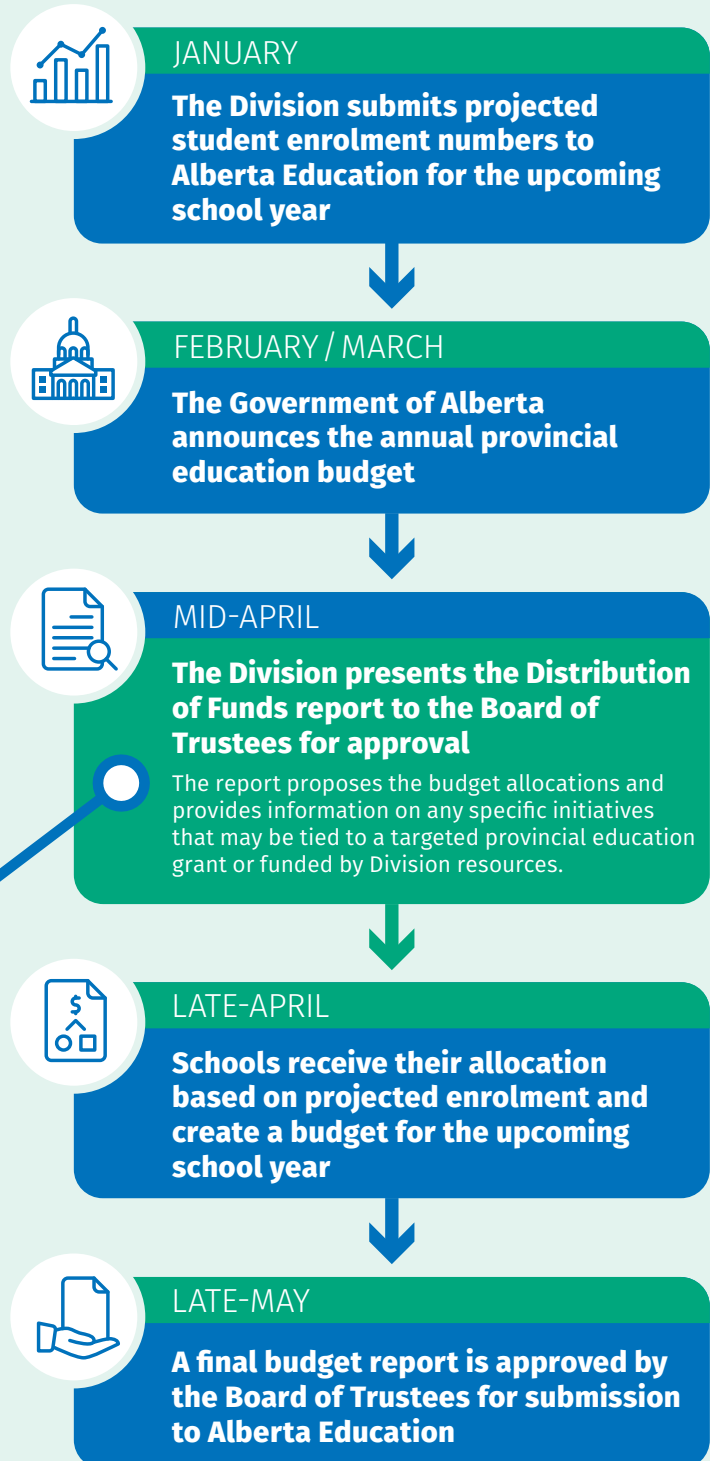
- ✓ **number of students at a school**
- ✓ **students who require specialized learning supports**
- ✓ **supports for newcomers to Canada**
- ✓ **social vulnerability of the overall school population**
- ✓ **supports for First Nations, Métis, and Inuit students and initiatives**

The Division's budget aligns with the priorities set out in the **2022–26 Strategic Plan**:

- build on outstanding learning opportunities for all students
- advance action towards anti-racism and reconciliation
- promote a comprehensive approach to student and staff well-being and mental health

Learn more about the 2022–26 Strategic Plan on [epsb.ca](https://www.e-psb.ca).

How it happens



Visit [epsb.ca/ourdistrict/budget](https://www.e-psb.ca/ourdistrict/budget) for more information.