

**DATE:** April 7, 2015

**TO:** Board of Trustees

**FROM:** Darrel Robertson, Superintendent of Schools

**SUBJECT:** Industry Changes to Washroom Design  
(Response to Request for Information #084)

**ORIGINATOR:** Dr. Lorne Parker, Acting Executive Director, Infrastructure

**RESOURCE STAFF:** Ken Erickson, Terri Gosine, Larry Schwenneker

**REFERENCE:** February 17, 2015 Board Meeting (Trustee Hoffman)

---

**ISSUE**

The following information was requested: Provide information outlining some of the industry changes regarding the design and/or construction of school washrooms that increased safety, dignity, and support responsible behaviour.

**BACKGROUND**

Washroom design in many of our existing schools includes fully enclosed spaces which does not allow for adequate supervision of students. New design practices have increased safety, allow for dignity and support responsible behaviour.

**CURRENT SITUATION**

Since Alberta Infrastructure and Alberta Education's joint development of the Standard School Design in 2010, there have been significant changes in the design of washrooms to ensure student safety and ease of supervision. New K-9 student washrooms do not have entrance doors and the sinks are fully visible off the corridor (Attachment I) which allows for increased supervision. The water closets and urinals are designed within the open concept with no direct sight lines to the actual stalls from the corridor (usually by a stub wall). Senior high schools are generally designed with closed washrooms as older students require more privacy for adjusting their appearance. As part of the new curriculum, Alberta Education has adopted the new standard for adding assisted washrooms to each floor of a school. This will include individual washrooms along corridors which can be used by staff, students with special requirements (barrier free) or gender neutral washrooms (Attachment II). In addition, "private" single stall washrooms, some dedicated specially for the staff and others available for public use may be incorporated. School modernization projects will incorporate into the design, where possible, open concept washrooms and single stall washrooms along corridors.

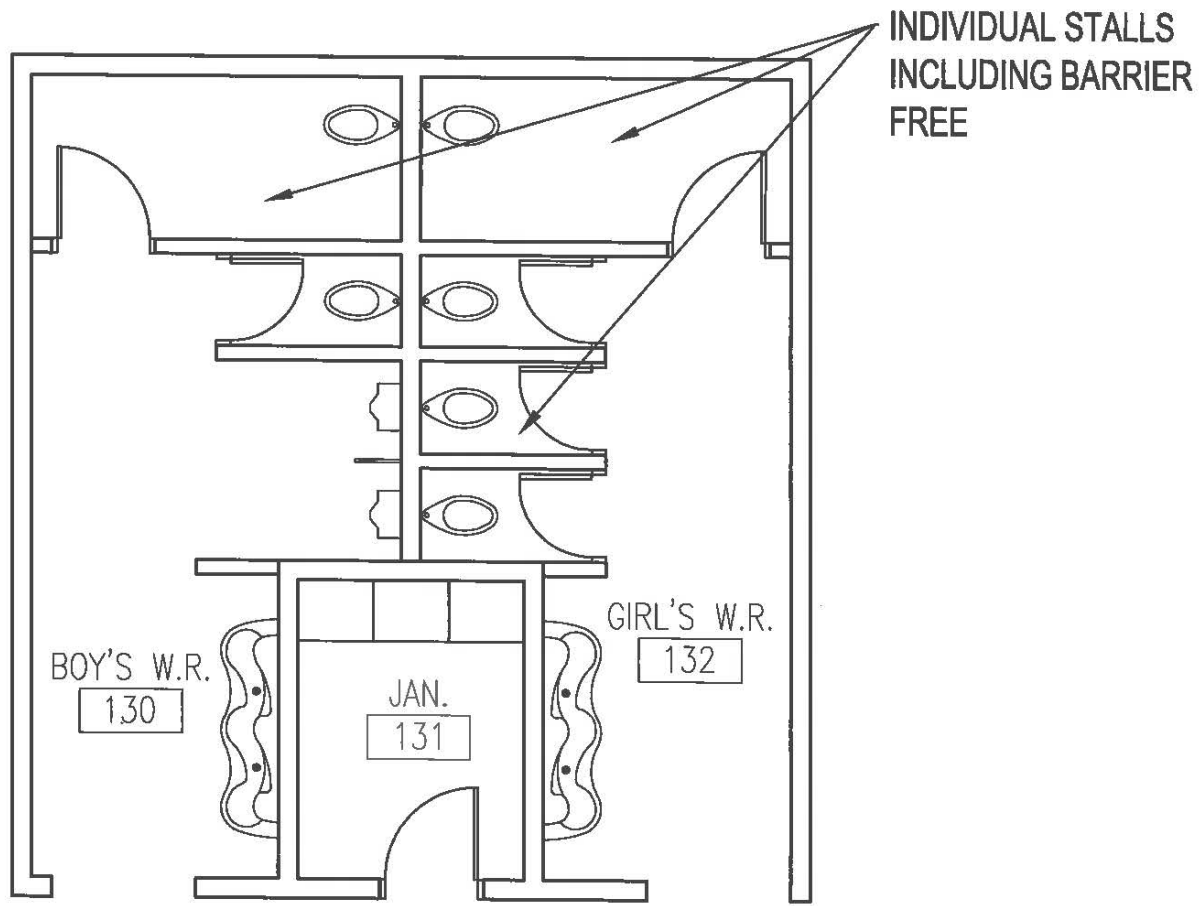
**KEY POINTS**

- New schools will include the open concept washrooms and individual washrooms along corridors.
- Modernization projects will include sinks in full view from corridors when current sight lines permit.
- Modernization projects will include single stall washrooms along corridors.

**ATTACHMENTS & APPENDICES**

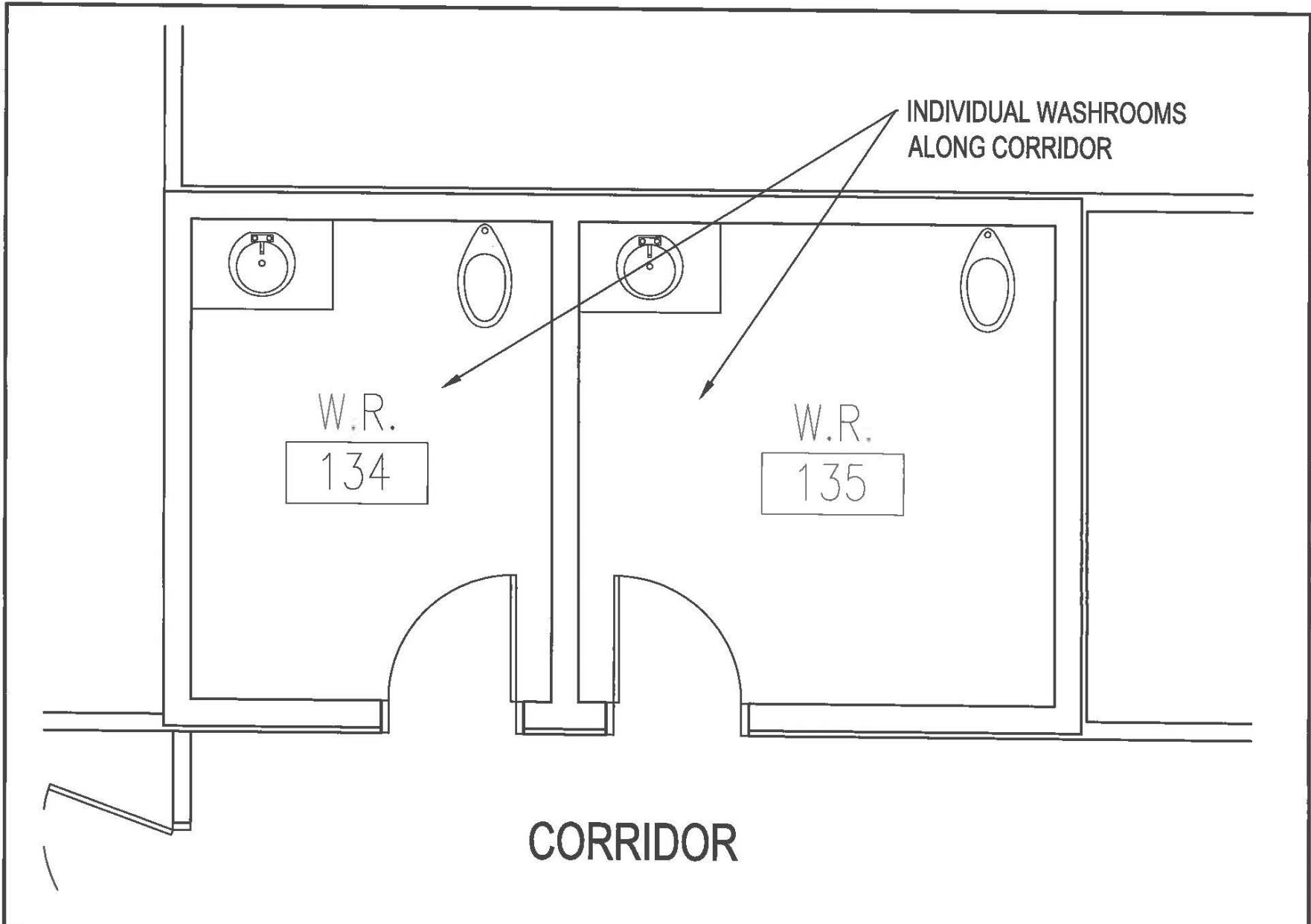
ATTACHMENT I Floor Plan showing washroom layout in the Standard School Design

ATTACHMENT II Floor Plan showing corridor washrooms in the Standard School Design



**CORRIDOR**

				ADDRESS		SCHOOL EDMONTON PUBLIC SCHOOL	
						PROJECT STANDARD SCHOOL DESIGN	
				SCALE NOT TO SCALE		DRAWING TYPICAL WASHROOM LAYOUT	
				CO-ORDINATOR T. GOSINE		DATE MARCH 2015	
NO.	REVISION	BY	DATE	DRAWN TAG	REVISION	SHEET OF 1	DRW'G. NO. SK-1



EDMONTON PUBLIC SCHOOLS

				ADDRESS		SCHOOL EDMONTON PUBLIC SCHOOL	
						PROJECT STANDARD SCHOOL DESIGN	
				SCALE NOT TO SCALE		DRAWING CORRIDOR WASHROOM LAYOUT	
				CO-ORDINATOR T. GOSINE		DATE MARCH 2015	
NO. REVISION	BY	DATE	DRAWN TAG	REVISION	SHEET OF	DRW'G. NO. SK-1	