

DATE: June 6, 2017

TO: Board of Trustees

FROM: Darrel Robertson, Superintendent of Schools

SUBJECT: Highlands School Consolidation Project – Consideration to Close Montrose and Mount Royal Schools

ORIGINATOR: Dr. Lorne Parker, Executive Director

RESOURCE STAFF: Josephine Duquette, Terri Gosine, Kim Holowatuk, Roland Labbe, Christopher Wright

REFERENCE: [Board Policy EA.BP - Infrastructure Planning Principles](#)
[School Act: Closure of Schools Regulation \(Alberta Regulation 238/1997\)](#)
[June 23, 2015 Board Report – Greater Highlands Area Consolidation Plan](#)
[November 24, 2015 Board Report – Amendment to the Three-Year Capital Plan 2016-2019](#)

ISSUE

To present to the Board of Trustees (the Board) the Superintendent's recommendation for consideration of school closures in order to facilitate the Greater Highlands Area consolidation concept.

In accordance with the School Act: *Closure of Schools Regulation (Alberta Regulation 238/1997)*, the first step for the Board is to approve motions to consider the closure of Montrose and Mount Royal schools.

If the Board approves motions to consider closure, there will also be potential for the Board to seek Ministerial approval for exemption from Sections 4 through 7 of the *Closure of Schools Regulation*. These sections include the requirement for consultation. Since extensive consultation has already occurred (Attachment I), going through this process again will delay the process now that funding has been approved and is viewed as unnecessary given the support for the project in the Greater Highlands community. Should the exemption be granted and the Board proceeds with motions for closure, the closure of Montrose and Mount Royal schools would take effect on the last operational day prior to the opening of the newly modernized K-9 Highlands School.

BACKGROUND

On January 21, 2014, the Province announced funding for a mature neighbourhood replacement school involving the consolidation of three or more schools. Three clusters consisting of two elementary schools and a junior high school were selected for consideration after reviewing school enrolments, attendance area residency numbers, the schools' utilization and each building's Facility Condition Index (FCI). Extensive consultation took place with the three cluster communities, including the Greater Highlands Area. That consultation process resulted in Board approval of the replacement school concept in the Lawton cluster with the Rundle School site identified as the location for Ivor Dent School.

During the course of that same consultation process, the Greater Highlands Area showed considerable interest in the project; however, they requested a longer, more extensive consultation that would result in a project that would better meet the needs and values of the greater community. A second

consultation process began in September 2014 which resulted in three design concepts presented to the wider public for feedback in February 2015. The goal of the consultation was to arrive at a community supported conceptual design that would become part of the capital priorities in the *Three-Year Capital Plan 2016-2019*. At the time, funding was not announced by the Province for this project.

On April 8, 2015, the Superintendent approved Highlands School Modernization Concept 2 (Attachment II) as the preferred design approach for the K-9 Greater Highlands Area Replacement School. This concept reflects District priorities established in the Board of Trustees' *Three-Year Capital Plan 2016-2019*. On April 29, 2015, a public information meeting was held to share the preferred design approach, outline next steps, including future motions to consider the closure of Montrose and Mount Royal schools, and respond to questions and concerns. Public feedback was received at the meeting and through the District website and email until May 6, 2015.

On June 23, 2015, the Superintendent presented to the Board, a recommendation to consider sending a letter on behalf of the Board to the Minister of Education in order to facilitate the Greater Highlands Area Consolidation Plan. The intent of the letter was to seek Ministerial support for the consolidation concept prior to a request for exemption from Sections 4 through 7 of *Alberta Regulation 238/1997*, the requirement for consultation. The motion to send the letter was approved by the Board.

On June 26, 2015, a letter was sent to the Minister of Education (Attachment III) outlining the following:

- The consultation process and findings related to the consolidation of Montrose and Mount Royal schools into a modernized Highlands School, approved Concept 2 being the preferred design approach.
- The Board's intention, once funding is provided, to request an exemption from Sections 4 through 7 of *Alberta Regulation 238/1997* based on the consultation process and findings.
- The assurance that consolidation of Montrose, Mount Royal and Highlands schools will not occur in advance of the opening of a fully modernized K-9 Highlands school.

A response was received from the Minister of Education on August 10, 2015 (Attachment IV) acknowledging the District's engagement process and community support, and the intent to request exemption from Sections 4 through 7 of *Alberta Regulation 238/1997*. The letter suggests ministerial support to receive such a request upon a funding announcement.

On November 24, 2015, the Board approved an amendment to the *Three-Year Capital Plan 2016-2019* to include Highlands Modernization Concept 2. The concept was subsequently approved for inclusion in the *Three-year Capital Plan 2017-2020*.

On March 22, 2017, the Province announced funding for Highlands Modernization Concept 2.

RELATED FACTS

- An extensive consultation process took place in the Greater Highlands Area between April 2014 and April 2015 regarding consolidation of Highlands, Montrose and Mount Royal schools into a single K-9 school.
- Modernization Concept 2, supported by the community, was approved as the preferred design concept. The concept was included in the *Three-Year Capital Plan 2016-2019* and the *Three-Year Capital Plan 2017-2020*.
- Correspondence with the Minister of Education, regarding support for exemption from Sections 4 through 7 of *Alberta Regulation 238/1997*, was received in August 2015.
- Funding for Highlands Modernization Concept 2 was announced on March 22, 2017.

RECOMMENDATION

1. That the Board approve a motion to consider closure of Montrose School.
2. That the Board approve a motion to consider closure of Mount Royal School.
3. That the Board approve a motion for the Board Chair to send a letter to the Minister of Education requesting exemption from Sections 4 through 7 of the *Closure of Schools Regulation (Alberta Regulation 238/1997)*.

OPTIONS

Based on the information provided in this report, the following options are considered most appropriate:

1. Approve motion 1.
2. Approve motion 2.
3. If motions 1 and 2 are approved, then approve motion 3.
4. Not approve motions.

CONSIDERATIONS and ANALYSIS

Highlands Modernization Concept 2 has been approved for funding by the Province. As the concept includes the consolidation of students from Highlands, Montrose and Mount Royal schools into a newly modernized Highlands School, consideration for closure of Montrose and Mount Royal schools is prudent so as not to delay the project. The closure of Montrose and Mount Royal schools would take effect on the last operational day prior to the opening of the newly modernized K-9 Highlands School.

NEXT STEPS

- If approved, a letter will be sent by the Board Chair to the Minister of Education requesting exemption from Sections 4 through 7 of the *Closure of Schools Regulation (Alberta Regulation 238/1997)*.
- Should the Minister grant an exemption, the Board will be asked to consider motions to close Montrose and Mount Royal schools, effective on the last operational day prior to the opening of the newly modernized K-9 Highlands School.

ATTACHMENTS and APPENDICES

ATTACHMENT I	Process of Public Consultation for the Greater Highlands Area Consolidation Project and Consideration of School Closures
ATTACHMENT II	Highlands School Modernization Concept 2
ATTACHMENT III	Letter to Minister of Education re Exemption from <i>Alberta Regulation 238/1997</i>
ATTACHMENT IV	Response from the Minister of Education

KH:kk

Process of Public Consultation for the Greater Highlands Area Consolidation Project and Consideration of School Closures

April 15, 2014	Letters* provided to parents of students in the Highlands cluster outlining the project and notifying them of the dates and times of the first and second public meetings.
April 15, 2014	Editorial board meeting with The Edmonton Journal.
April 16, 2014	Media release* and technical briefing – all major media outlets. Launch of “Space for Our Students” website. Release of advertising posters* to schools.
April 16-23, 2014	Advertisements* ran in the Edmonton Examiner – all zones.
April 16-25, 2014	Roadside signage – 2 in Highlands cluster.
April 17, 2014	Letters* provided to parents of students in the schools surrounding the Highlands cluster that may be affected by the replacement school, outlining the project and notifying them of the dates and times of the first and second public meetings.
April 17-25, 2014	Facebook advertising and ad graphics* posted to EPSB Facebook platform.
April 22, 2014	Letters* sent to City of Edmonton administration and community leagues.
April 22-24, 2014	3 Public Meetings – Highlands, Lawton, Westmount. Format: General presentation followed by small group discussion and feedback. Each breakout session consisted of a facilitator and a note taker. All notes were captured onscreen for participants to see. All comments* were later collated and shared back on our website on May 5.
April 22, 2014	Survey #1 launched to gather initial feedback on the project including concerns, questions, vision for a new K-9 facility and the use of closed buildings.
May 5, 2014	Notes* from April meetings available online for public viewing.
May 6, 2014	Meeting with EPSB community partners.*
May 5-9, 2014	Posters received by schools advertising upcoming public meetings May 20-22. Digital posters* sent to community partner agencies.
May 11, 2014	Survey #1 closed, data collated* and shared back via website.
May 7-21, 2014	Advertisements* ran in the Edmonton Examiner – all zones. Note: all advertisements clearly articulate that school closures will be considered.
May 7-22, 2014	Facebook advertising and ad graphics* posted to EPSB Facebook platform.
May 12, 2014	Digital posters* sent to community leagues.
May 12-16, 2014	Advertisements* provided to schools for school newsletters and for posting on Schoolzone.
May 13, 2014	Survey #2 launched to gather feedback on developed options for each site within the cluster. Each option clearly articulates which schools would be considered for closure.
May 15, 2014	Letters* provided to parents of all students in cluster schools and potentially affected surrounding area schools outlining the proposed options for each site and providing notification of the upcoming public meetings as well as directing them to the website and feedback survey. Provided for all students at Montrose, Highlands, Mount Royal and Virginia Park schools.
May 16, 2014	Meeting with City of Edmonton administration.
May 20-22, 2014	3 public meetings – Highlands, Lawton, Westmount. Format: General presentation followed by small group discussion and feedback on presented options. Each breakout session had a facilitator and a note taker.

	All notes were captured onscreen for participants to see. All comments later collated and shared on our website May 30.
May 30, 2014	Notes* from May meetings available online for public viewing.* Survey #2 closed – data collated.*
June 11, 2014	Advertisements* ran in the Edmonton Examiner – all zones.
June 11-17, 2014	Facebook advertising and ad graphics* posted to EPSB Facebook platform.
June 17, 2014	Letters* provided to parents of all students in cluster schools and potentially affected surrounding area schools outlining the recommendations to be presented to the Board of Trustees on June 24, 2014. The letters also invited them to attend the final public meetings and directed them to the website where they could provide additional feedback. Letters provided for all students at Montrose, Highlands, Mount Royal and Virginia Park schools. Website updated to share details of the recommendations to be presented to the Board of Trustees. Final online feedback survey open.
June 18, 2014	Final public meetings in each cluster community to share details of the recommendations to be put forward to the Board of Trustees and final opportunity to provide feedback.
June 19, 2014	Recommendation report posted to website.*
June 23, 2014	Feedback from final meetings and web survey provided to the Board of Trustees.*
June 24, 2014	Public Board meeting. Trustees vote on the recommendations. Greater Lawton Area – Rundle School site – selected as the location for the replacement school. Motions approved to consider the closure of R.J. Scott, Rundle and Lawton schools. Motion approved for the Board Chair to send a letter to the Minister of Education requesting exemption from sections 4 through 7 of the <i>Closure of Schools Regulation</i> in the <i>School Act</i> .
Sept. 16, 2014	Public Board Meeting – Motion to close R.J. Scott, Rundle and Lawton schools upon the opening of the replacement school approved.
Sept. 22, 2014	Consultation with the principals of Highlands, Mount Royal, Montrose and Eastglen schools regarding consolidation of schools in the Greater Highlands Area – a continuation of the conversation begun April 15, 2014.
Sept. 29, 2014	Letters* sent to all parents of students at Highlands, Mount Royal and Montrose schools inviting representatives to serve on a Working Committee. Letter sent to the City of Edmonton inviting representation on the Working Committee. Letters sent to the Bellevue, Highlands, Montrose, and Newton Community Leagues inviting representation on the Working Committee.
Oct. 27, 2014 Nov. 12, 2014 Nov. 25, 2014 Jan. 26, 2015 Feb. 10, 2015	Working Committee meetings. November 12 meeting included interested members of the general public. All meeting minutes and shared information posted to District website after each meeting.
Feb. 11 & 18, 2015	Advertisements* ran in the Edmonton Examiner – Zone 2.
Feb. 18, 2015	Facebook advertising and ad graphics* posted to EPSB Facebook platform. Release of advertising posters* to schools for use on Schoolzone. Concepts for public feedback and online survey posted to District Space for Students website. Survey ran February 18 to March 2.

Feb. 24, 2015	Format: General presentation followed by small group discussion and feedback on presented concepts. Each breakout session had a facilitator and a note taker. All notes were captured onscreen for participants to see. All comments later collated and shared on our website March 16.
April 8, 2015	Superintendent approved Highlands School Modernization Concept 2 as the preferred design approach for the K-9 Replacement School in the <i>Three-Year Capital Plan 2016-2019</i> .
April 15, 2015	Digital posters* sent to schools and community leagues re: upcoming public meeting April 29, 2015.
April 15 & 22	Advertisements* ran in the Edmonton Examiner – Zone 2.
April 17, 2015	Email sent to Working Committee members outlining the Superintendent's decision and next steps in the process. Advertisement attached for distribution to respective stakeholders.
April 22, 2015	Letters* provided to parents of all students at Highlands, Montrose, and Mount Royal schools outlining the Superintendent's decision and the consideration of closure recommendations to be presented to the Board of Trustees on June 24, 2014. The letters also invited them to attend the final public meeting and directed them to the website where they could provide additional feedback. Website updated to share details of the recommendations to be presented to the Board of Trustees.
April 23, 2015	Facebook advertising and ad graphics* posted to EPSB Facebook platform.
April 29, 2015	Final public meeting at Highlands School. Format: General presentation followed by small group discussion and feedback on preferred design concept and next steps including closure motions for Montrose and Mount Royal schools. Each breakout session had multiple District staff to lead discussion and answer questions and a note taker. All notes were captured onscreen for participants to see. All comments later collated and shared on our website May 12.
April 29, 2015	Final online feedback survey open.
May 12, 2015	Public feedback received at April 29 meeting and online survey posted to District website.
June 23, 2015	Public Board meeting. Trustees to vote on recommendations for the Board Chair to send a letter to the Minister of Education outlining the consultation process and feedback and the intention to request exemption from sections 4 through 7 of the <i>Closure of Schools Regulation</i> in the <i>School Act</i> once funding is announced.
May 17, 2017	Letters* provided to parents of all students at Montrose and Mount Royal schools outlining the Superintendent's intent to bring a recommendation to the Board of Trustees asking them to consider the closure of these schools as part of the consolidation project. Notice of a meeting to be held May 31 included.
May 17 & 24, 2017	Advertisements* ran in the Edmonton Examiner – Zone 2.
May 17, 2017	Facebook advertising and ad graphics* posted to EPSB Facebook platform.
May 31, 2017	Public Meeting at Highlands School Format: Brief presentation followed by an opportunity to ask questions and provide feedback.

*Copies available upon request

Highlands School Modernization Concept 2

- Modernization and addition*
- Create a K-9 Arts Program School at Highlands School site
- Consolidate students from Highlands, Montrose and Mount Royal schools at the modernized Highlands K-9 school
- Close Mount Royal and Montrose schools
- Demolish both the 1954 addition and free-standing annex
 - Phased construction may be considered; however, temporary relocation of students during construction may be necessary

*All designs are at the conceptual stage; this project is currently unfunded. Detailed design work would begin once funding was announced and a budget determined.



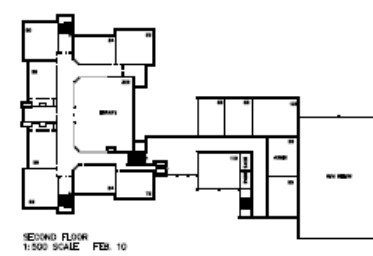
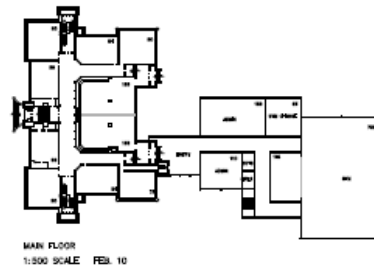
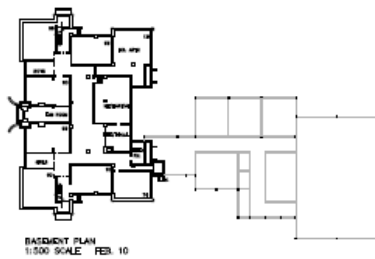
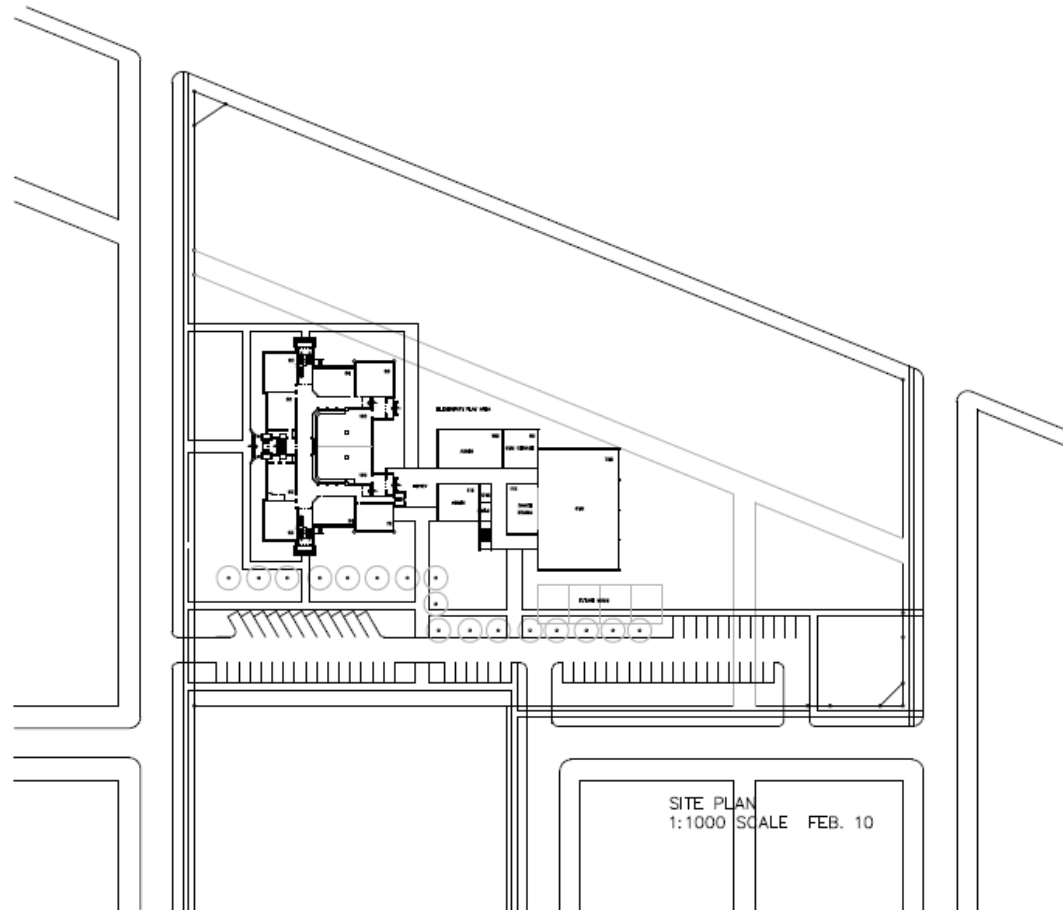


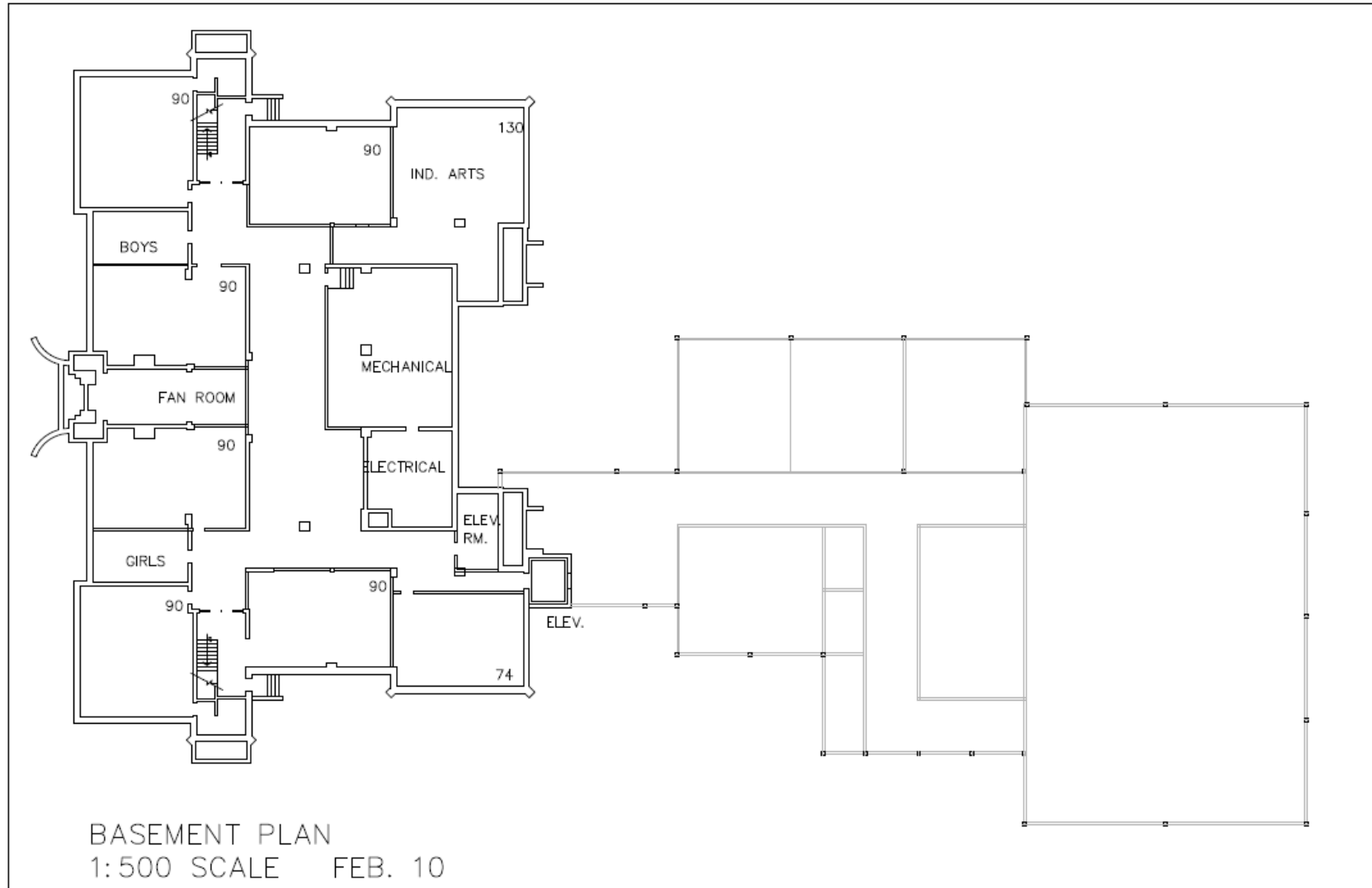
2

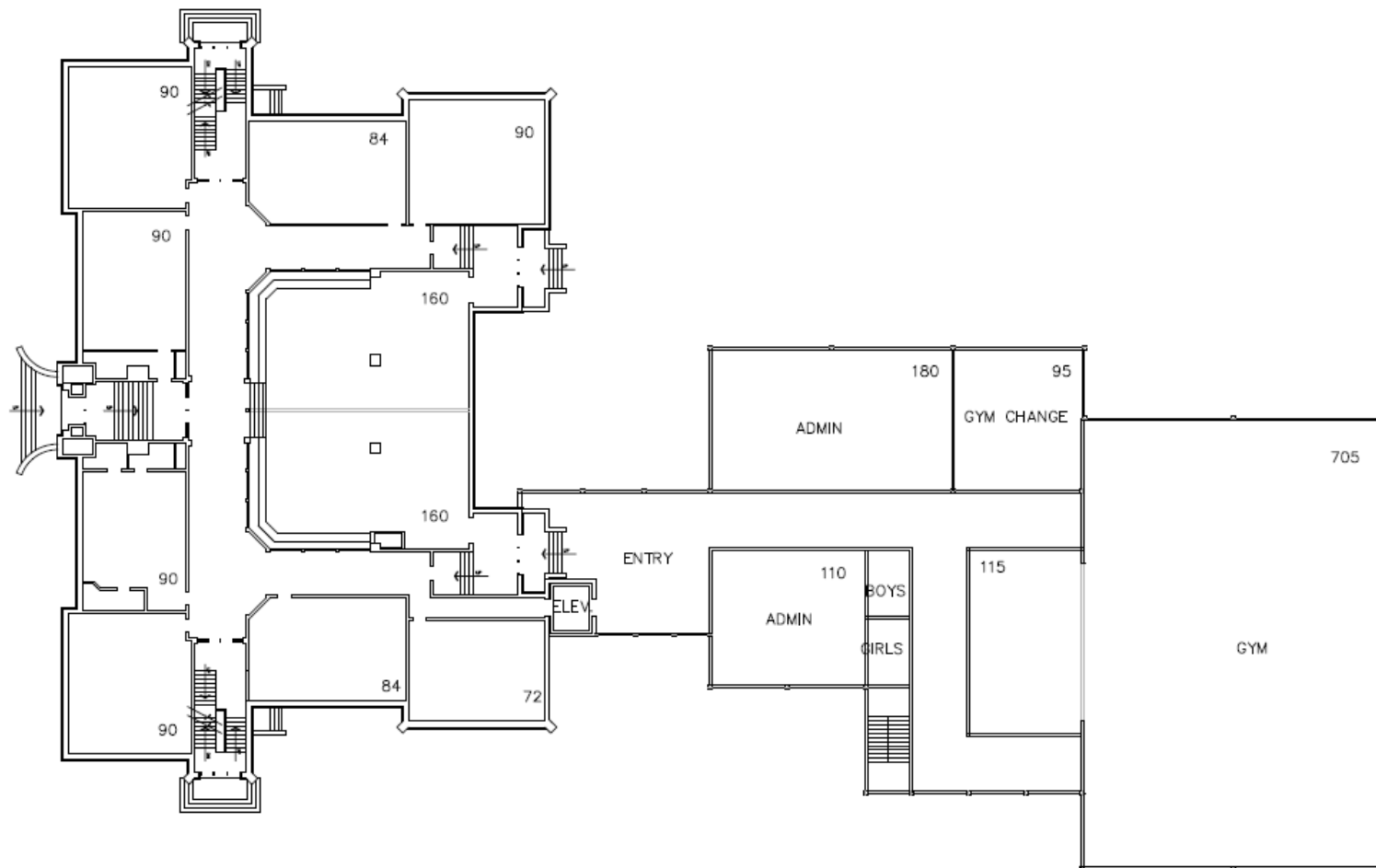


Highlands School Modernization Concept 2



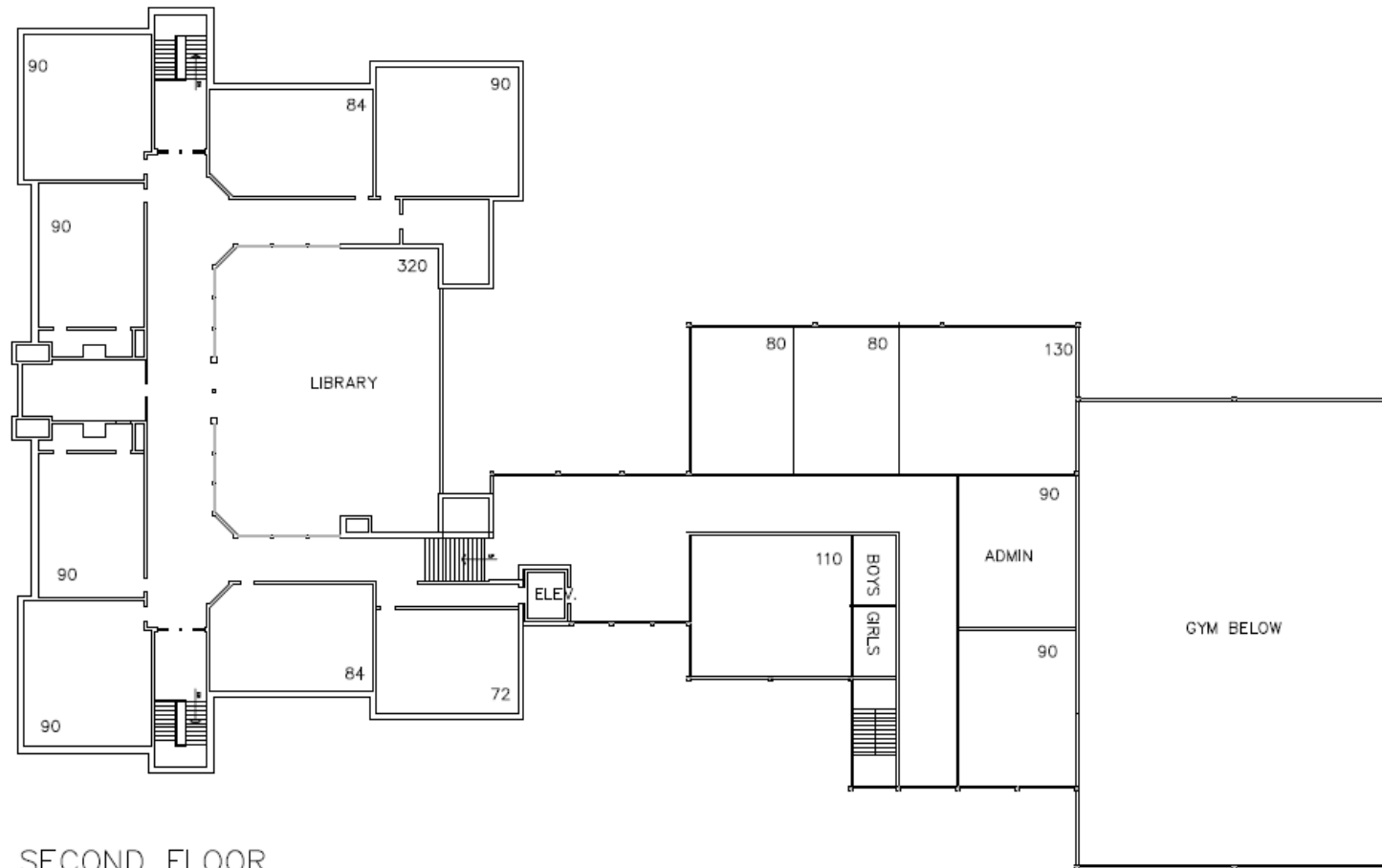






MAIN FLOOR

1:500 SCALE FEB. 10



SECOND FLOOR
1:500 SCALE FEB. 10



BOARD OF TRUSTEES

WARD A Cheryl Johner
 WARD B Michelle Draper
 WARD C Orville Chubb
 WARD D Ray Martin
 WARD E Ken Gibson
 WARD F Michael Janz
 WARD G Michael Janz
 WARD H Nathan Ip
 WARD I Sherry Adams

SUPERINTENDENT OF SCHOOLS

Darrel Robertson
 Centre for Education
 1 Kingsway NW
 Edmonton AB T5H 4G9
 T 780-429-8000
 F 780-429-8318
 E info@epsb.ca

June 26, 2015

The Honourable David Eggen
 Minister of Education
 424 Legislature Building
 10800 – 97 Avenue
 Edmonton, AB T5K 2B6

Dear Minister Eggen:

Re: Exemption from *Alberta Regulation 238/97*

Beginning in April 2014, the Board of Trustees (the Board) for Edmonton Public Schools engaged in an extensive consultation process with the communities for Montrose, Mount Royal and Highlands schools regarding the possible consolidation of the students from Montrose and Mount Royal schools into a modernized Highlands School. District Administration received a very positive response from the community to the prospect of this project.

Attachment I outlines, in summary form, the consultation process and communication with the community over a 15 month period. A summary of feedback from the consultation meetings with these communities in 2015 and two online surveys is included in Attachment II. In the Board's judgment, the feedback strongly indicates that these communities are excited and enthusiastic about having a modernized school that will provide an appropriate and equitable learning environment for their children; an environment that includes the effective incorporation of technology, 21st Century learning supports – such as advanced labs – and equal access for children of all abilities.

With the support of the community, Administration has approved Highlands School Concept 2 (Attachment III) as the preferred design approach and will seek an amendment to the District's *Three-Year Capital Plan 2016-2019* to replace the current Highlands K-9 Replacement School. A consolidation of Montrose, Mount Royal and Highlands schools will not occur in advance of the opening of a fully modernized K-9 Highlands School.

This is to advise that should the Provincial Government decide to fund this project, the Board would ask for exemption from the requirements of sections 4 to 7 of *Alberta Regulation 238/97*, pursuant to section 1.2(2) of the regulation. The rationale for this request is that the requirements of these sections of the regulation have already been fulfilled by the referenced consultation.

.../2



Your granting the requested exemption would expedite matters, and make the reality of a modernized school come all the sooner to these communities.

Yours truly,

A handwritten signature in black ink, appearing to read 'MJ', with a long, sweeping horizontal line extending to the right.

Michael Janz
Board Chair

MJ:cv

Attachments

Process of Public Consultation for the Greater Highlands Area Consolidation Project and Consideration of School Closures

April 15, 2014	Letters* provided to parents of students in the Highlands cluster outlining the project and notifying them of the dates and times of the first and second public meetings.
April 15, 2014	Editorial board meeting with The Edmonton Journal.
April 16, 2014	Media release* and technical briefing – all major media outlets. Launch of “Space for Our Students” website. Release of advertising posters* to schools.
April 16-23, 2014	Advertisements* ran in the Edmonton Examiner – all zones.
April 16-25, 2014	Roadside signage – 2 in Highlands cluster.
April 17, 2014	Letters* provided to parents of students in the schools surrounding the Highlands cluster that may be affected by the replacement school, outlining the project and notifying them of the dates and times of the first and second public meetings.
April 17-25, 2014	Facebook advertising and ad graphics* posted to EPSB Facebook platform.
April 22, 2014	Letters* sent to City of Edmonton administration and community leagues.
April 22-24, 2014	3 Public Meetings – Highlands, Lawton, Westmount. Format: General presentation followed by small group discussion and feedback. Each breakout session consisted of a facilitator and a note taker. All notes were captured onscreen for participants to see. All comments* were later collated and shared back on our website on May 5.
April 22, 2014	Survey #1 launched to gather initial feedback on the project including concerns, questions, vision for a new K-9 facility and the use of closed buildings.
May 5, 2014	Notes* from April meetings available online for public viewing.
May 6, 2014	Meeting with EPSB community partners.*
May 5-9, 2014	Posters received by schools advertising upcoming public meetings May 20-22. Digital posters* sent to community partner agencies.
May 11, 2014	Survey #1 closed, data collated* and shared back via website.
May 7-21, 2014	Advertisements* ran in the Edmonton Examiner – all zones. Note: all advertisements clearly articulate that school closures will be considered.
May 7-22, 2014	Facebook advertising and ad graphics* posted to EPSB Facebook platform.
May 12, 2014	Digital posters* sent to community leagues.
May 12-16, 2014	Advertisements* provided to schools for school newsletters and for posting on Schoolzone.
May 13, 2014	Survey #2 launched to gather feedback on developed options for each site within the cluster. Each option clearly articulates which schools would be considered for closure.
May 15, 2014	Letters* provided to parents of all students in cluster schools and potentially affected surrounding area schools outlining the proposed options for each site and providing notification of the upcoming public meetings as well as directing them to the website and feedback survey. Provided for all students at Montrose, Highlands, Mount Royal and Virginia Park schools.
May 16, 2014	Meeting with City of Edmonton administration.
May 20-22, 2014	3 public meetings – Highlands, Lawton, Westmount. Format: General presentation followed by small group discussion and feedback on presented options. Each breakout session had a facilitator and a note taker. All notes were captured onscreen for participants to see. All comments later collated and shared on our website May 30.

May 30, 2014	Notes* from May meetings available online for public viewing.* Survey #2 closed – data collated.*
June 11, 2014	Advertisements* ran in the Edmonton Examiner – all zones.
June 11-17, 2014	Facebook advertising and ad graphics* posted to EPSB Facebook platform.
June 17, 2014	Letters* provided to parents of all students in cluster schools and potentially affected surrounding area schools outlining the recommendations to be presented to the Board of Trustees on June 24, 2014. The letters also invited them to attend the final public meetings and directed them to the website where they could provide additional feedback. Letters provided for all students at Montrose, Highlands, Mount Royal and Virginia Park schools. Website updated to share details of the recommendations to be presented to the Board of Trustees. Final online feedback survey open.
June 18, 2014	Final public meetings in each cluster community to share details of the recommendations to be put forward to the Board of Trustees and final opportunity to provide feedback.
June 19, 2014	Recommendation report posted to website.*
June 23, 2014	Feedback from final meetings and web survey provided to the Board of Trustees.*
June 24, 2014	Public Board meeting. Trustees vote on the recommendations. Greater Lawton Area – Rundle School site – selected as the location for the replacement school. Motions approved to consider the closure of R.J. Scott, Rundle and Lawton schools. Motion approved for the Board Chair to send a letter to the Minister of Education requesting exemption from sections 4 through 7 of the <i>Closure of Schools Regulation in the School Act</i> .
Sept. 16, 2014	Public Board Meeting – Motion to close R.J. Scott, Rundle and Lawton schools upon the opening of the replacement school approved.
Sept. 22, 2014	Consultation with the principals of Highlands, Mount Royal, Montrose and Eastglen schools regarding consolidation of schools in the Greater Highlands Area – a continuation of the conversation begun April 15, 2014.
Sept. 29, 2014	Letters* sent to all parents of students at Highlands, Mount Royal and Montrose schools inviting representatives to serve on a Working Committee. Letter sent to the City of Edmonton inviting representation on the Working Committee. Letters sent to the Bellevue, Highlands, Montrose, and Newton Community Leagues inviting representation on the Working Committee.
Oct. 27, 2014 Nov. 12, 2014 Nov. 25, 2014 Jan. 26, 2015 Feb. 10, 2015	Working Committee meetings. November 12 meeting included interested members of the general public. All meeting minutes and shared information posted to District website after each meeting.
Feb. 11 & 18, 2015	Advertisements* ran in the Edmonton Examiner – Zone 2.
Feb. 18, 2015	Facebook advertising and ad graphics* posted to EPSB Facebook platform. Release of advertising posters* to schools for use on Schoolzone. Concepts for public feedback and online survey posted to District Space for Students website. Survey ran February 18 to March 2.
Feb. 24, 2015	Format: General presentation followed by small group discussion and feedback on presented concepts. Each breakout session had a facilitator and a note taker. All notes were captured onscreen for participants to see. All comments later collated and shared on our website March 16.

April 8, 2015	Superintendent approved Highlands School Modernization Concept 2 as the preferred design approach for the K-9 Replacement School in the <i>Three-Year Capital Plan 2016-2019</i> .
April 15, 2015	Digital posters* sent to schools and community leagues re: upcoming public meeting April 29, 2015.
April 15 & 22	Advertisements* ran in the Edmonton Examiner – Zone 2.
April 17, 2015	Email sent to Working Committee members outlining the Superintendent's decision and next steps in the process. Advertisement attached for distribution to respective stakeholders.
April 22, 2015	Letters* provided to parents of all students at Highlands, Montrose, and Mount Royal schools outlining the Superintendent's decision and the consideration of closure recommendations to be presented to the Board of Trustees on June 24, 2014. The letters also invited them to attend the final public meeting and directed them to the website where they could provide additional feedback. Website updated to share details of the recommendations to be presented to the Board of Trustees.
April 23, 2015	Facebook advertising and ad graphics* posted to EPSB Facebook platform.
April 29, 2015	Final public meeting at Highlands School. Format: General presentation followed by small group discussion and feedback on preferred design concept and next steps including closure motions for Montrose and Mount Royal schools. Each breakout session had multiple District staff to lead discussion and answer questions and a note taker. All notes were captured onscreen for participants to see. All comments later collated and shared on our website May 12.
April 29, 2015	Final online feedback survey open.
May 12, 2015	Public feedback received at April 29 meeting and online survey posted to District website.
June 23, 2015	Public Board meeting. Trustees to vote on the recommendations. Motions to consider the closure of Montrose and Mount Royal schools. Motion considered for the Board Chair to send a letter to the Minister of Education requesting exemption from sections 4 through 7 of the <i>Closure of Schools Regulation in the School Act</i> .

*Copies available upon request

Public Engagement Feedback For: **Greater Highlands Area**

A general presentation in the theatre was followed by the option to participate in a facilitated breakout session. Three rooms were used with approximately 10-15 participants in each.

Room 1

Highlands School Modernization/Addition - Concept 1

Strengths:

- Looking at the preservation of a historical building
- Demolishing the addition (eye sore)
- More central location

Challenges:

- Footprint for Highlands is much smaller compared to MR footprint
- In 50 years, trying to renovate both the new and old
- Working with the community to maintain historic significance and character
- Geographic location: proximity to 118 Ave.
- Building surprises with modernization of Highlands
- Similarity to residential schools

Additional Comments:

- Where is the Elm/Jr High separated?
- Value to a historical group to help facilitate renovations?
- Budget costs for managing elevator servicing?
- What are they doing to the main building?
- Boiler, walls, floors, fixed?
- Upgrades to gym (currently very small)

Highlands School Modernization/Addition - Concept 2

Strengths:

- Maintains the general shape of the current building
- More natural light than Concept One

Challenges:

- Taking away from the sports fields (space for playground?)
- Longer section parallel to 118th: volume, traffic, etc.
- Transportation: parking and yellow school bus drop-off may be an issue
- Finding ways to make the old space to be more energy efficient
- More costly maintaining the old space rather than looking at warranted work on a new space
- Accommodating Arts Core requirements (acoustics, lighting, electrical, etc.) in the older space

Additional Comments:

- Where is the Elm/Jr High separated?
- Value to a historical group to help facilitate renovations?
- Budget costs for managing elevator servicing?
- What are they doing to the main building?
- Boiler, walls, floors, fixed?
- Upgrades to gym (currently very small)

Mount Royal School – Concept 3

Strengths:

- Province pays for initial cost and less cost to the district re: maintenance
- New space!
- Less traffic
- Up to modern environmental standards
- Geographical "safer" feel to the space (away from heavy traffic)
- More residential space
- Opportunity for architectural coherence with a completely new building
- Clearly laid out areas for elem/jr high
- Losing the common current design eliminates one of these "cookie-cutter" schools
- Security standpoint: central entrance
- Drop off areas
- Destroying an asbestos problem
- Fresh start
- Bigger footprint to allow more options
- Proximity to River Valley
- Equitable school compared to the newer schools on the periphery of Edmonton
- Opportunity for larger gym facility

Challenges:

- Where are the yellow busing zones? Designated zones
- Transportation for jr highs: ETS (walking further)
- Relocating current students during construction
- Farther for Montrose students (not as central)
- Community concerned about a new building fitting into the current "style"
- Community concerned with construction (proximity to residences)
- Elementary students walking through jr high wing to access gym

Additional Comments:

- Students will be less concerned about historical significance vs. enjoying modern amenities
- Comments re: Process - Making sure that planning committees provide earlier notification of meetings
- Demographic disparity with groups being represented (smaller groups being drowned out by more vocal groups)
- Be very careful what is promised

Room 2

Highlands School Modernization/Addition - Concept 1

Strengths:

- See the additions first
- Elevator would be near the entrance
- Set up for pedestrian traffic in the front of the school and car traffic at the drop off/pick up area - separates the two
- Would maintain the original building within the neighbourhood

Challenges:

- Keeping the old/original building intact
- Can the 2 side additions be pushed to the back to maintain the original character of the building
- Traffic for drop off and pick up - 62 Street is a narrow street, may cause congestion issues

Additional Comments:

- None

Highlands School Modernization/Addition - Concept 2

Strengths:

- Parking lot would be shared with the community league

Challenges:

- Would the existing park/green space be compromised due to the parking lot?

Additional Comments:

- none

Mount Royal School – Concept 3

Strengths:

- Strong design, would work well in the community
- Like the courtyard concept

Challenges:

- For classrooms that border the courtyard, are there windows that face into the courtyard?
- Student drop off at 55 Street
- Lose Highlands as a school and potentially as a building

Additional Comments:

- Has the middle school model been explored or considered? - i.e. Eastglen has a low enrolment, could the idea of having grade 9's come to the school be explored?
- What is the government and School Board doing to make sure that these existing deferred maintenance issues do not happen again in the future?
- It would be interesting to see what teaching staff in existing buildings (i.e. Highlands) would say about the new conceptual drawings - Do the proposed spaces meet their needs?
- What happens with the land of the schools that are being closed, and what impact does it have on the community?
- After the new school is built, and if enrollment still was not high, would they amalgamate again with the Virginia Park area?
- How could the community address a concern about Concordia college acquiring Virginia Park School - Still want to keep Virginia Park School
- Would the students be able to remain in the school while the renovations/new builds took place?
- Mount Royal site would be more useful for community development (Future seniors housing?)
- Would the after school care be maintained in any of the schools?

- No what decision is made, it will have an impact on Virginia Park School - Offering the same programming
- Having younger and older grades together could create mentorship between younger and older students
- Would this model create larger class sizes?

Room 3

Highlands School Modernization/Addition - Concept 1

Strengths:

- If the roof deck is used for an educational space ... this would be great.
- School owns more of the land.

Challenges:

- There doesn't seem to be a designated drop-off/pick-up area.
- How will the parking and flow of traffic be handled with the population increase?
- Not much evidence of thought into green-space.
- Predicting overcapacity, where would the portables go?

Additional Comments:

- Of the 10 million going towards this construction, why is over 7 million going towards portables and additions?
- What are the budgets for each of the 3 concepts?
- What is the capacity of each building and what is that based on?
- What spaces would be designated for elementary vs. JH?
- What is the plan for the roof deck? Is this a space that will be used by students? If so, for what purpose?
- Where would the boot-rooms be located?
- More details needed - it's easier to talk more positively about the Mount Royal plan because more is visible.
- Need more input from First Nations, Metis and Inuit communities (especially from the Montrose community).
- **Could parents be asked to rank the 3 concepts: "Where would you choose to send your child?" Add this question to the current web survey?

Highlands School Modernization/Addition - Concept 2

Strengths:

- The main entrance is further away from 118ave, closer to the elevator, parking and drop-off/pick-up. It is also closer to the administrative offices.
- School owns more of the land.
- If there is an off-set stage in the gym, it allows for more seating

Challenges:

- There doesn't seem to be a designated drop-off/pick-up area.
- How will the parking and flow of traffic be handled with the population increase?
- Not much evidence of thought into green-space.
- Predicting overcapacity, where would the portables go?

Additional Comments:

- Outdoor play areas for both concept 1 and 2 of Highlands?
- Outdoor skating rink on site?
- What spaces would be designated for elementary vs. JH?
- Where would the boot-rooms be located?
- More details needed - it's easier to talk more positively about the Mount Royal plan because more is visible.
- Need more input from First Nations, Metis and Inuit communities (especially from the Montrose community).
- **Could parents be asked to rank the 3 concepts: "Where would you choose to send your child?" Add this question to the current web survey?

Mount Royal School – Concept 3

Strengths:

- The courtyard idea
- Location of library - with windows
- Aesthetically pleasing
- The courtyard area would be great for outdoor classrooms

Challenges:

- The designated drop-off/pick-up area might not be sufficient for the population increase.
- How will the parking and flow of traffic be handled with the population increase?
- Centralize the shared spaces (drama, art, gym) to make them equally accessible to both elementary and JH.
- Less land for expansion if/when population increases
- It is further from the pool for the JH students.
- Predicting overcapacity, where would the portables go?
- Need more input from First Nations, Metis and Inuit communities (especially from the Montrose community).
- A off-set stage in the gym would allow for more seating (see Highlands concept 2)

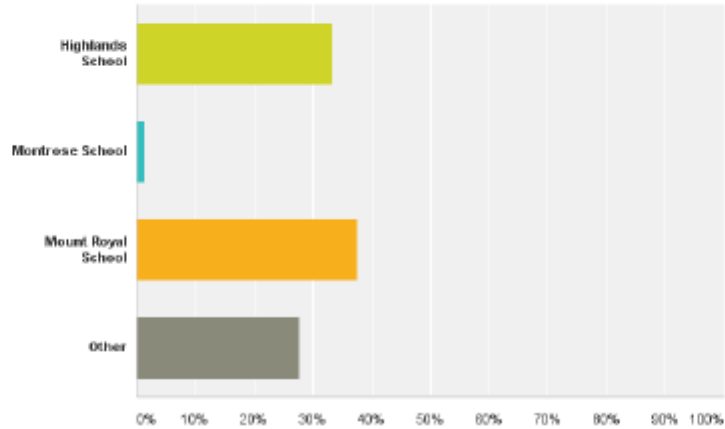
Additional Comments

- What plans or options are there for relocating the students during construction (if the original footprint is being used)?
- What spaces would be designated for elementary vs. JH?
- Where would the boot-rooms be located?
- Where would the JH lockers be located?
- **Could parents be asked to rank the 3 concepts: "Where would you choose to send your child?" Add this question to the current web survey?

Public Engagement Feedback – Online Survey February 18 – March 2, 2015

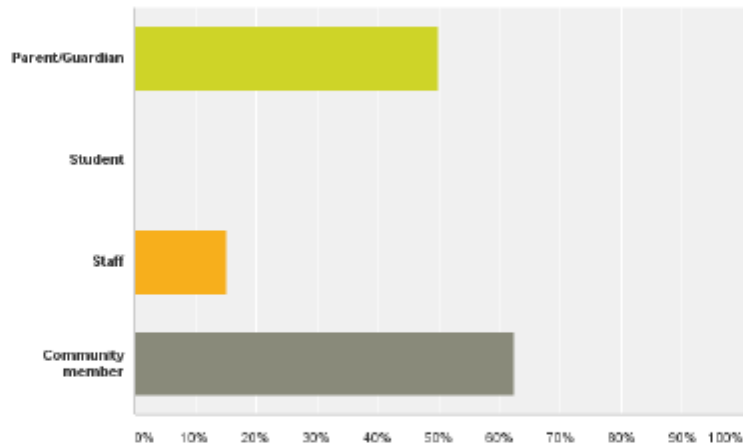
Q1 With which school community are you most closely associated?

Answered: 72 Skipped: 0



Q2 Please identify your role(s) in the school community - you may choose more than one

Answered: 72 Skipped: 0



Highlands School Modernization/Addition – Concept 1



What do you see as the STRENGTHS of Concept One?

- Saves the old school (but hides the historic building). Best location for the replacement school.
- I'm not sure if I like this concept - the previous one fits in more with the area. It looks like you're trying to match old with new. I am in favour of keeping the original Highlands building, but not sure this is the way.
- traffic would have little impact.
- Maintains a heritage building.
- Centrally located.
- Keeps the focal point of the original tower a key part of the design, orients new development to the side, preserves a heritage building that is important to the city and the community
- Keep a nice old building.
- Compared to the Montrose design, this would encourage more of a feeling of community among students, the design is more open with large spaces for library and gym, open viewing area for gym, outdoor deck etc. I like the idea of keeping and 're-using' an old building for its intended purpose.
- I love the library area as a separate wing I believe this has potential to be a functional and beautiful space for students to gather and work in. Using the space the annex currently occupies is a good idea, but of course attached to the building. the gymnasium is nice and big - and I assume the existing smaller gym would also remain as a gym - this is good and will allow plenty of space for physical activity and other types of activities such as drama for all grades.
- I like the Mount Royal location!
- It creates more space.
- none
- That is keeps the historical building.
- Keeping the existing school. Strong tie-in to existing Community Space (i.e.: community garden, community hall, Highlands Park, etc.). More central to the community. Current Principal already has done much of the legwork needed to establish an optimistic connection to this location, which goes a long way.
- It is an architecturally pleasing school already.
- Making it larger is a wonderful idea, modernizing without tearing it down is an even BETTER idea. Well done.
- Required space for arts core. Saving of heritage building which is important to community. Good access for junior high for bus routes. Close access to Highlands Community League to build relationships.
- Highlands should be upgrade but using concept 2
- The old building remains intact. Relative to the second design, it preserves the field space at the east side of the school to allow for student activity.
- No strengths with this concept. It detracts from the original historic Highlands School

- Enhances activity at a valuable heritage resource.
- In general I prefer this layout to Highlands Concept 2. I like the open areas from the second floor to first floor, the two story library space. here is more field is seems with this concept. Flow seems more natural. I would like to see details on the floor plan and use of space to compare Concept 1 and 2 and to compare with Mount Royal option.
- None
- As long as the historical main building is restored and added on to, its the best choice for the community...
- I love that they are thinking of keeping the original building. It has great importance to the community.
- there is no separate building for gym and the office
- Good size, plenty of room, maintains some character aspects of the original school, maximizes capabilities of available land.
- Ten bus routes drop off right near school. Designated drop off area. Large field does not require crossing any parking lots. Large gym. Large library. Efficient use of land
- There is more room at Highlands to accommodate construction.

Concept One CHALLENGES?

- The two wings when they come out in front of the historic school hide the building and cut light from the building. Too heavy looking on the front area. All the traffic entering from 61st street would create major concerns for the neighbours east and south of the school.
- Could cost more than a new building.
- This is an old building that will need a forklift change to support the new teaching procedures, high tech opportunities, and efficiencies that would be offered by a new modern building. I also feel that it only leaves one face of the existing legacy building (facing West), all other sides are revamped or changed, thus removing the historical views, and memories that community members value.
- None
- Facade is similar to residential schools built in the same timeframe. Old building with lots of issues that will likely cost more at the outset and cost the district more for maintenance long term. Integrating new build with the old building. Less sports areas outside. Challenge of 118 avenue location (i.e. higher crime area). Two storey with elevators required (maintenance required for that too). How to incorporate needs of modern school into things electrical/wiring and acoustic issues for the arts "hard core" group (auditorium, music room etc.)
- Coats associated with retrofitting a building.
- The parking is nowhere near the front entrance. because it builds on both sides, significant portions of the original building would be hidden (presumably demolished in order to connect the new pieces)
- Unfavourable location.
- It removes the currently aesthetically pleasing, historical aspects of the building & makes it look generic & boring. Also, the open to below areas will created heating & cooling challenges
- Disrespects the massing, height and scale of the historic school structure. Concentrates all of the parking access and egress at 61 Street, where it intrudes most on the quiet community side of the school site. A large addition to the school should be located along 118 Avenue, along with the parking and drop-off associated with the larger school. Parent drop-offs of students, daycare drop-offs, and school bus traffic at the school is already causing problems for our community along 61 Street; speeding, right of way accidents, and noise - why would we want more?
- That the historical building is covered up.
- None.
- It should be of utmost importance to maintain the character of the school both outside and inside.
- "open to below"??????????? Have you met kids????????????????????
- Loss of north and south facades.
- Awkward design
- Few warranties will apply to existing plant after construction. (Upkeep will be expensive). Old plant has physical similarities to Residential Schools

- The challenge is that the new additions are not respectful of the original Highlands School,.
- Blocks views to the north and south facades of the building.
- I find it very hard to compare with Mount Royal option as very little information is given to these concepts on floor plan and use of space. Where are the upper and lower grade classrooms relative to each other? Are there designated rooms for art, music, dance/drama? Is there a playground? It is not clear for the artist drawing if the exterior of the original school is kept or removed. Keeping original brick and tower would be important as it is a landmark in the community.
- Not liking it
- Keeping the old part of the school.
- I do not see an art room, drama, dance, etc? I'm not sure that there is room for these rooms which are much needed if it is to be Arts Core.
- The look of the original school is lost here and the design seems too much for a small street like 62 Street. It's more of a design I'd expect for a school facing an avenue, like Balwin School or one of the schools along 144 Avenue. It seems to "big" for a neighbourhood street. The office is not shown but I don't think it's placed on the north side of the original entrance.
- I think the addition should be put on the back of the school and the office should be by the front door. It seems silly to have a beautiful entrance and people coming to the office have to go to the back of the building.
- May be overwhelming to younger children, mix of children may not be ideal.
- Beside a busy street. Children learning in a basement. Multiple floors are more difficult for ALL students. Takes time to go to and use the elevator. Library far from washrooms. Original structure, still old (how long before it needs repairs again?) How long would Highlands have to be closed? Will those students return?

ADDITIONAL COMMENTS:

- I don't mind internal changes that would be made to the historic building but save the exterior features that are there. The present window replacements work well with the historic building.
- Again, find a plan to keep the original building.
- I would prefer to actually use the Mount Royal site, and remove the annex, and additions to the Highlands building, allowing the Historical original building to remain.
- I can't tell from the drawings. I hope the exterior of the historic building will be kept.
- Further consultation with the Aboriginal community over the residential school similarity to get their input.
- I don't get this design. It is very much lacking in details.
- Don't do this
- This design is unacceptable
- I like this better than the Mount Royal idea.

Highlands School Modernization/Addition – Concept 2



What do you see as the STRENGTHS of Concept Two?

- The original building is preserved from the front and two sides. The addition to the rear is in keeping with the size and general design of the original building. Traffic flow is better coming from 62nd and exiting on 61st or flow in opposite direction. Parking can be used by the community for soccer and other games when school is not in use. Much more attractive design than the first one for the Highlands School Property. Landscaping could be very attractive.
- More open and spacious.
- Maintains a heritage building.
- Centrally located
- Preserves the heritage of the building for the community
- the original building is more visible, and better preserved. the parking is near to a main entrance, although it does detract from the original main entrance on 62 street. I prefer the footprint on multiple levels rather than all required space on one floor.
- None maybe keep the community happy with the nice old building.
- Large library, large space for drama and ind. Arts.
- None.
- It's hard to tell what it will look like. Concept 2 looks like it retains the historical facade? If so, this one has a better use of space.
- none
- That is keeps the historical school
- This looks even better than #1. Same reasons as previous.
- Looks nice.
- Proper space for arts core programming. Saves the integrity of historical building by placing new addition on back. Historical component important for community. Centrally located within area. Easy access for students from Montrose area to come across 118 ave - crosswalk with lights already there. Love the open concept area from the old gym on the main floor. Would really open the area up to light, use and functional space. Great access to ETS for junior high students - 118 ave major bus route. Already has designated art rooms. Great space for displaying artwork. The library area would be an amazing space. Close access to Highlands Community League to build relationships.
- Parking, layout, great design
- Same as other Highlands plant design
- This concept respects the original school. The new portion is located at the rear. It's compatible, distinguishable and subordinate to the original school,
- Enhances activity at a valuable heritage resource. Maintains views to the north and south facades of the

- historic building.
- See comments for Concept 1. Difficult to compare as very few details on floor plan and use of space. In general I prefer Concept 1 based on what is provided.
- TOO BIG
- It's a similar footprint to what is there now... This is the best option!!!!
- Now this is MUCH better. I like this one the best. I like it.
- The most pleasing to the eye, keeping the original school front and center on the street. This concept also allows the new addition to be seen along 118 Avenue. It keeps the history intact and adds a beautiful addition on the back. It keeps the parking east, west and south of the school so the neighbours along 62 Street will still be looking at a building that fits into the age (history and aesthetics) of the neighbourhood and they won't be looking at a massive new modern building all along 62 Street. It fits into the community. This concept makes Highlands School central for students who live in both Montrose School and Mount Royal School boundaries. It's convenient for all bus routes and parking for drop off and pick up.
- I like that the added structures are at the back of the building not at the front. I believe that putting them on the side would be an extra expense in order to maintain the historic look of the school. The parking lot seems to be in a better place. Highlands being on the avenue makes for easy ETS bus access.
- Nice building, maintaining many character aspects of the original, good use of land, scaled back size from 'Concept 1' may be more manageable for younger children.
- Ten bus routes drop off right near school. Designated drop off area. Large field does not require crossing any parking lots. Large gym. Preserves the original look of the school
- same as concept 1

Concept Two CHALLENGES?

- What ever material is used on the outside of the new addition must complement the brick of the school. I am sure it won't be brick but other materials will complement it. Having the office at the back of the school is not good it should be moved closer to the central entrance.
- Funding, various corners opens school up to vandalism from 118 Avenue
- I feel this site not ideal, and is somewhat small to have multiple activities going on outside (eg. k-Gr 6) students activities, as well as Jr. High activities. I also would prefer the new school to be located further away from the 118 Ave retail locations.
- None
- It feels very much like 2 separate pieces. the current setup is similar, and the connecting point is a bit awkward. I think that if the central area were more open it would have a better flow.
- See previous comments for other modernization.
- Seems like separate spaces glued together, older wing and an appendage of a new wing.
- Unfavourable location.
- Are there enough washrooms spaces allotted for the # of people who will be using the building?
- Same comments regarding negative impacts to adjacent community on 61 Street. All parking and drop-off, access should be located along 118 Avenue or 60 Street, close to 118 Ave.
- That the historical parts of the school are covered up with a shell.
- It needs A LOT of modernization.
- Having a modern k-9 school in an established neighbourhood
- There will be little room for sports fields in this design as opposed to the first Highlands modernization concept
- The challenges are to keep the cost reasonable and to ensure that the original school is maintained and fully functional. The original school cannot be ignored at the expense of the new addition.
- Seems to be less field than in Concept 1. Interior flow does not seem as natural as in Concept 1 as well. Not clear if original historic brick and tower is kept or if it is covered over. Keeping would be important to me. I find it very hard to compare with Mount Royal option as very little information is given to these concepts on floor plan and use of space.
- Not liking it

- Modernizing while keeping the historical feel.
- The only challenge I see is that, again, the office/administrative area is away from the front door and the students. This is the MOST frustrating thing about working in this school. Every Principal (four) I have worked with has tried to get the office back to the original designated office area, the north side of the front doors. I don't see why this plan can't be changed putting the office back where we can supervise both students and the door and two classes could be put into the administrative spot (180) on the concept 2 drawing (main floor). I cannot tell you how many times we have to run because someone is trying to get into the school from the front, which is where people try to enter as it's the legal address of the school. This should be changed as we are the users of this building and this office in a separate building has never worked.
- The school office needs to be by the front entrance of the school. The entrance is beautiful and it would be a shame to have people who come to the school not to see it. Not having the office by the front entrance is very confusing for people making deliveries they come there but can't find the office and a safety issue for our students we can't see who is coming in.
- I would like to see the transition in structures made seamless by updating the inside and outside of the existing building and matching it in quality and style to the new building. This would avoid that 'temporary' or 'hasty' look, and ensure a long-lasting and appealing facility.
- Beside a busy street. Children learning in a basement. Multiple floors are more difficult for ALL students. Takes time to go to and use the elevator. Original structure, still old (how long before it needs repairs again?) How long would Highlands have to be closed? Will those students return?
- same as concept 1

ADDITIONAL COMMENTS:

- Possible areas for community use should be considered with in the new buildings. Thank you for putting together the design concepts and working with the community and the schools. So much better having a little time to work on this for future use. Last year things were a little rushed for ideas and input.
- I can't tell from the pictures I hope the e terror of the historic building will be kept.
- could the admin area move to the front (62 st entrance)? It is such a stunning entry point to the building. then, if the parking were shifted as close as possible to the SW corner, the front entry would be functionally the main entrance. What is currently designated admin, in the centre of the two portions, would shift to classroom space, I imagine...
- Above all it's the needs of all the kids not that parents or community that need to be considered. What is the best for the kids learning in a bright modern new building or in an old building that will always have maintenance issues.
- I don't really understand this design and would like to hear more about it.
- Smartest plan
- This concept is the best one of the three concepts presented in this survey.
- The new addition could be snugged up closer to the back of the historic school if there are concerns about the new addition impacting playing fields.
- As long as there is a drama room, dance room, art room, etc included I am all for this concept. I still do not like the idea of housing Jr high students with Elementary though. being that I am looking at this as a Jr High for my children only, I like this concept.
- Having worked in this old school for a number of years I can tell you that while she is old she is still a beautiful building and has another 100 years in her. I've worked in more modern buildings with serious issues and I'm pretty sure that the 1950-1960 buildings were not built to last the way these old buildings were. We've had fourth and fifth generation students attending Highlands. I think we have the opportunity to take this school back to what the community and the Edmonton Public School Board envisioned when she was built, to bring pride to the community of Highlands and to take their children and to prepare them for the future.
- It would be nice to preserve Highlands School as it has been here for over 100 years. We are becoming a throw away generation instead of persevering our past.

New Construction Mount Royal School Site – Concept 3



What do you see as the STRENGTHS of Concept Three?

- location on the grounds... ie. north side leaving play areas to the south. View from 112 avenue would be attractive. I do like the courtyards but wonder about how they would be used in a winter city. The concept design is lovely and fits into the neighbourhood.
- Spacious, courtyard area per divisions, outdoor space
- The location is the perfect site, and we can gain two benefits - 1) utilize the old school at Highlands for something valuable for the community (Special interest groups, Community friendly business, etc.) whilst enjoying the architectural beauty of older times, and 2) revitalize the Mount royal site with a new school for our youth, removing the older building and continuing to utilize the green space. the site easily accessible, and further away from the retail section of 118 ave.. traffic impact to the community would be not that significant, just different - rather than on the west side of the location, it would be the east, and slightly more due to the Jr. High.
- No perceivable strengths
- New modern building built to today's environmental standards. More money up front but less maintenance in the long run. Location is better (away from 118 avenue) for those in highlands area. Open and bright (more light). One storey is nice. Different areas for different students (elementary /jr high). Easier to incorporate technology. Kids would be excited to come to this school and would be on par with the schools in the newer areas.
- Nature, open space, parking
- Beautiful new building, specific areas for different arts-based learning experiences. Ample parking.
- There is a lot of green space and windows, not often seen in older schools
- All brand new has some advantages, though not generally a high priority for families who have chosen to live in a historical neighbourhood
- There seem to be many classrooms, but they seem small... hopefully just a trick of the drawings...
- I love the layout, that there are courtyards for the younger kids as well as for the older kids. I LOVE the drop off and extra parking. This is a really well laid out school and I think our community would be lucky to have such a building and environment for our children to go to school in.
- Updating an aging building is one thing REPLACING an aging building is another.
- better parking and drop off point
- Where will the playground be?
- New build.
- Safe playground area for elementary.
- Good use of space.

- None
- Nothing horrible idea
- Contemporary, bright, energy efficiency, whole plant under warranty. Large footprint surrounded by residential dwellings on all sides. A chance to remove one of a very common school design buildings in which asbestos and other issues may exist and replace it with a healthy building.
- New Construction making it easier to design a building to fit the needs of the School.
- Distinct areas for lower and upper grades but sharing of common areas
- Designated art, dance/drama, industrial art etc. rooms (is there a music room?)
- Lots windows and light
- One level for ease of access
- Separate courtyards for the upper and lower grades
- Looks lovely, I love the idea of a drop off/ visitor parking area! Great green space! Like that Elementary and Junior high have separate courtyards.
- I don't care for it...
- The fact that Jr High and Elementary are a bit separated. The drama/dance room is nice to see (although having one of each makes more sense for an arts school, especially one of this size).
- A separate courtyard for elementary and Jr High.
- Nice concept, good use of space, split of younger and older children is present but not overt, all necessary amenities appear to be included.
- Not beside a busy street
- Eight bus routes drop off right near school
- Two streets for parent drop off and designated drop off area
- Beautiful courtyards / special spaces for elementary/jr. high
- Large field and courtyards do not require crossing any parking lots
- There is access to ball diamond and community park
- Large gym
- Very efficient
- Beautiful
- All new
- One level, making easy access for everyone
- It is important to me that my children continue to be in an Arts Core school. I also like it that they would continue to be in the same school when one is in junior high and one is in elementary. Then my younger child will no longer have to attend out-of-school care because the older one can take care of him before and after school.

Concept Three CHALLENGES?

- ... possible loss of Highlands School building. Traffic concerns for neighbours on 55 st and 53rd streets with location of parking lots. Also concerns for neighbours backing onto the school alley as to what it would look like. If windows are on the back of the school facing alley it might be a vandalism concern.
- funding, adjust for ups and downs of populations so the community isn't dealing with this in another 10 years.
- likely a zone for drop off would need to be established (Kiss and ride lot).
- Long way for Montrose students to travel.
- Sprawling, no real design features of note, looks barn-like
- Dealing with the die hards in the community who say it doesn't fit in with the character of the neighborhood. Farther for the kids in the Montrose area (they have to cross 118ave).
- I like the way the schools are already.
- Funding compared to modernization of existing structure, design feels a little 'campus'-like, not what one expects an elementary school space to look/ feel like.
- Will there be enough room for all the students needing to access it? It doesn't look very large - there is more parking than there is building.
- I find it to be a large, sprawling building because it is all on one level - it simply takes up an enormous

amount of the available land. I'm struggling to identify a front entrance on the building as drawn. I'm not sure why the choice would be to build 100% new, rather than to build an addition. It seems wasteful, and I can't find anything in the assessment report that indicates this would be necessary. I really wish I had been able to be at the public meeting

- Getting other parents to approve. Funny that the parents most opposed to a new school have chosen to home school or move their kids to another school. Hope they are less vocal this time round.
- I really don't like the idea of building a whole new school from nothing. We should stick with the property at Highlands Junior High.
- Length of time it will take from demolition to completion.
- where is the playground for the younger students?
- Looks sizable
- Cost of building materials to accomplish architectural concept. Not enough space for proper arts core programming. How will all classes from k-9 have required access to music, drama, dance, visual art, and music on a daily basis? On far end of area - very far for Montrose elementary students to get to.
- There is a parking lot directly in front of my house.
- Destroying the surrounding community
- Redesignating students during its construction, community perception of a modern building that does not match the general community.
- Costly, Location. Just another uninteresting school building
- Less central location than Highlands. Would make demolition of Highlands School, a valuable heritage resource, more likely.
- As is spans from 55 St to 53 St will the current Mount Royal be closed and student's relocated while school is built? This disruption would be a concern for me. Where is the playground? If no playground committed with rebuild, this would be a concern for me. Is there a space for out of school care? This is a priority for our family.
- Not sure I would need more info....
- Too big. As a parent of children that go to Virginia Park, I love the smallness of the school at an elementary level. Every teacher knows every child and the teachers and the principal knows the families as well. This cannot happen in a school this large.
- One level
- Minimal room for growth, small library space, poor gymnasium location (centrally located would be optimal). Location of play equipment for younger children may present obstacles.
- Library far from the washrooms. How long would MR have to be closed? Will those students return?
- The possible lengthy construction period and possible temporary relocation of students.

ADDITIONAL COMMENTS:

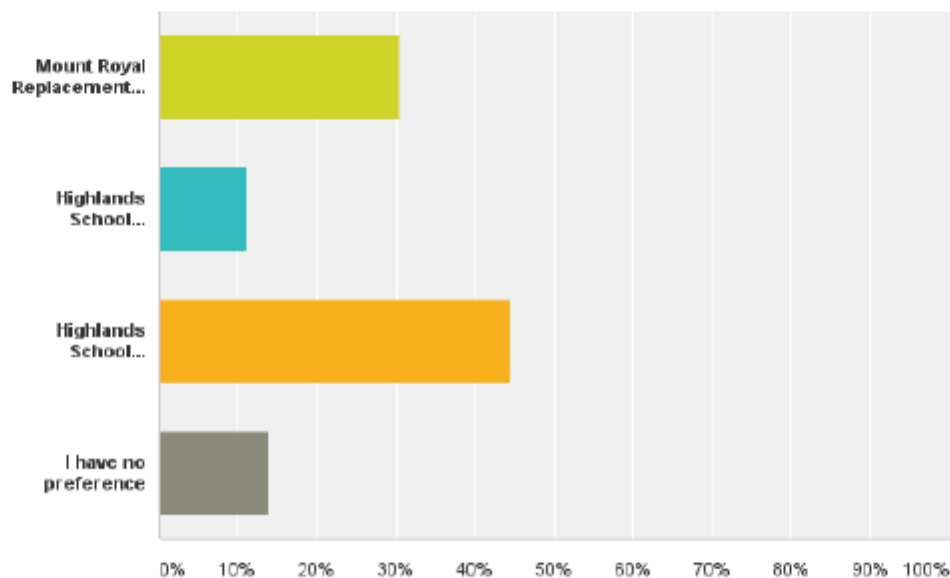
- still feel the best location is on the Highlands School grounds for the school. This property if it did become available for senior housing would be good for the community. Brown stones or some higher end senior or adult housing.
- What is the plan for the Original Highlands Junior High. I do hope it is kept and not demolished. Used for something community-based? Seniors housing?
- If the Highlands location is used, I hesitate to send our kids there, would prefer to look elsewhere. However if a new modern school were developed in the Mount Royal location, I feel that would be a significant opportunity that would work well for nearby families.
- If the footprint is the same as for the current school, will there be enough space for all students in the future?
- We do not want a school consolidation, nor do we want our children attending a k-9.
- Worst concept, do not do this.
- Kids will readily embrace new school over revamp of old school. From an equity standpoint, a new facility parallels the advantage enjoyed by newer communities who have the advantage of recently built, technology current buildings
- I don't see a music room on the floor plan. I would assume if there are art rooms there will be a music

room.

- What is the front of the building? Need to know avenues, confused by what direction I am seeing? Front/back? Where are the main doors? Will they all share one gym? Where is the music room?
- If I had to lose a school in the area of rather keep highlands
- Being that i am looking at this school from a Jr High perspective and my kids will not ever go here for elementary, I am not as adverse to the size for Jr. high.
- It's not central to the area where you are thinking of removing schools.

Q12 Which concept do you prefer?

Answered: 36 Skipped: 36



Other General Comments:

- Again... Thank You to those who have put this all together from the persons who did the designs, administrative staff who participated in the sessions and development of the plans, community members who participated in the sessions. The presentations were clear and concise. I look forward to hearing how it all comes out in the final presentation and hopefully see something concrete happen in the next few years.
- If the MR concept wins out, what will be the plan for Highlands Junior High? Please don't tear it down.
- During the presentation on 24 February 2015 it was suggested that there are less children in the GHA than before. This ignores the number of young families that have been moving into the neighbourhood. I resent developers that promise schools in new neighbourhoods. I realize that this is not only beyond the scope of this survey, but also the school board. Education taxes are collected through property taxes. Distribution of funding by the province is more equitable, but there should be more coordination between school boards and urban planners. Let alone that there should only be public school boards.
- I prefer either Highlands concept IF the community wants it. I live in the area myself and went to both

Mount Royal and Highlands as a child. I would like elementary and Jr. High Schools to stay separate but support what the majority. I think all concepts require an outdoor classroom, and more garden and garden and natural play opportunities.

- Please save Highlands school! I love either of the Highlands School Modernization Concepts 1 or 2
- This is the best for the kids and puts them on par with schools in the newer areas and in the Beverly area. Listen to the Montrose parents as well and find a way to get their voices heard. They have been so neglected in favor of their affluent neighbors in highlands who are more organized, have the time and are politically astute. Financially the Mount Royal replacement makes the most sense long term as there will be less maintenance issues and less worry about creating another eyesore to replace the 1954 highlands addition (basically repeating the same mistake made before). Paint and other other cosmetic upgrades on an old beat up school don't cut it. Our kids deserve better.
- It's hard to tell from the renderings what the exteriors of the schools will look like. Many windows & an accessibility of nature & green space into the classrooms is important. It would also be a let if the original Highlands school would remain intact, including the stylized facade. Also, how much thought has been given to the number of students who may be accessing the school over time? Is there room for population growth given the gentrification in the areas? And it really doesn't look lol washroom space has been well thought out, but it's hard to tell from the drawings.
- Highlands site is too small to support such a massive addition of students, busses, daycare, traffic.
- From the designs I've seen the new school at Mount Royal is my preference. I thought I would LOVE the Highlands Modernization but from the designs I've seen the historical aspects of the school are covered up and the additions are not as efficient as a new school would be.
- Let's revisit "open to below"not with kids running around.
- I truly hope that Highlands is selected. It provides the required space for arts core and will save an important part of our educational heritage buildings - which are very important, our history is important (young people need to know that history and heritage is important and is valued in our society). Highlands has a large number of heritage and historical resources. This site also offers great opportunity to partner and collaborate with the Highlands Community League which is adjacent to the school.
- I don't think the focus should be put on the aesthetic design of the school buildings. The following are all more important:
 - Capacity- There should not be a net decrease in the number of learning spaces in the replacement school compared to the schools that would close. Contrary to the statistics presented, there appears to be a large increase in the number of young children in Highlands, as well as young couples moving in. It would be a shame to reduce the number of spaces, only to face the challenges of overcrowding seen in the suburbs, especially with infill housing becoming more prevalent. I understand that families have fewer children than in the 1950's, but there have already been school closures in this area.
 - Longevity- It's a shame that a 60 year old building is considered to be beyond its lifespan. If this is indeed the case, a new school should be built to last much longer than that.
 - Location- Highlands would appear to be the most central location in the Highlands neighborhood. However, this would leave a large space to the nearest school in the east (it appears that many children come to Mount Royal from that direction), yet Virginia Park would be close by. In this case, Mount Royal may be the best site, increasing the boundaries of Virginia Park School so that it is more of a neighborhood school. Location for ease of transportation may not be a cost considered in the operation of the school, but it is very important for families. I think looking at the map and ensuring even spacing of schools is important.
 - School Makeup- I believe that many parents would have concerns about a K-9 school. I think that it would be preferable to amalgamate the 3 elementary schools in the neighborhood with a separate junior high.
 - Efficiency- If Edmonton Public Schools is pursuing this model to save costs and improve efficiency, I think it would make sense to go all the way and include Virginia Park in the amalgamation. To say that the province offered the money for a 3:1 amalgamation and that's thus the model that needs to be followed is short-sighted and inflexible. Virginia Park is also an old school. It may have had good enrollment in the past, but that may not be the case in the future.
 - Also, if this decision is being made primarily about money and numbers, then the choice should be made considering which concept is the most cost-effective, providing that the school is built with quality.
 - Programming- I like the arts core programming offered in the neighborhood, but it appears to have been

introduced to capitalize on the good enrollment at Virginia Park. If Virginia Park is not being included in this process, I think that a new school should have its own identity and be open for more of a variety of programming e.g. languages.

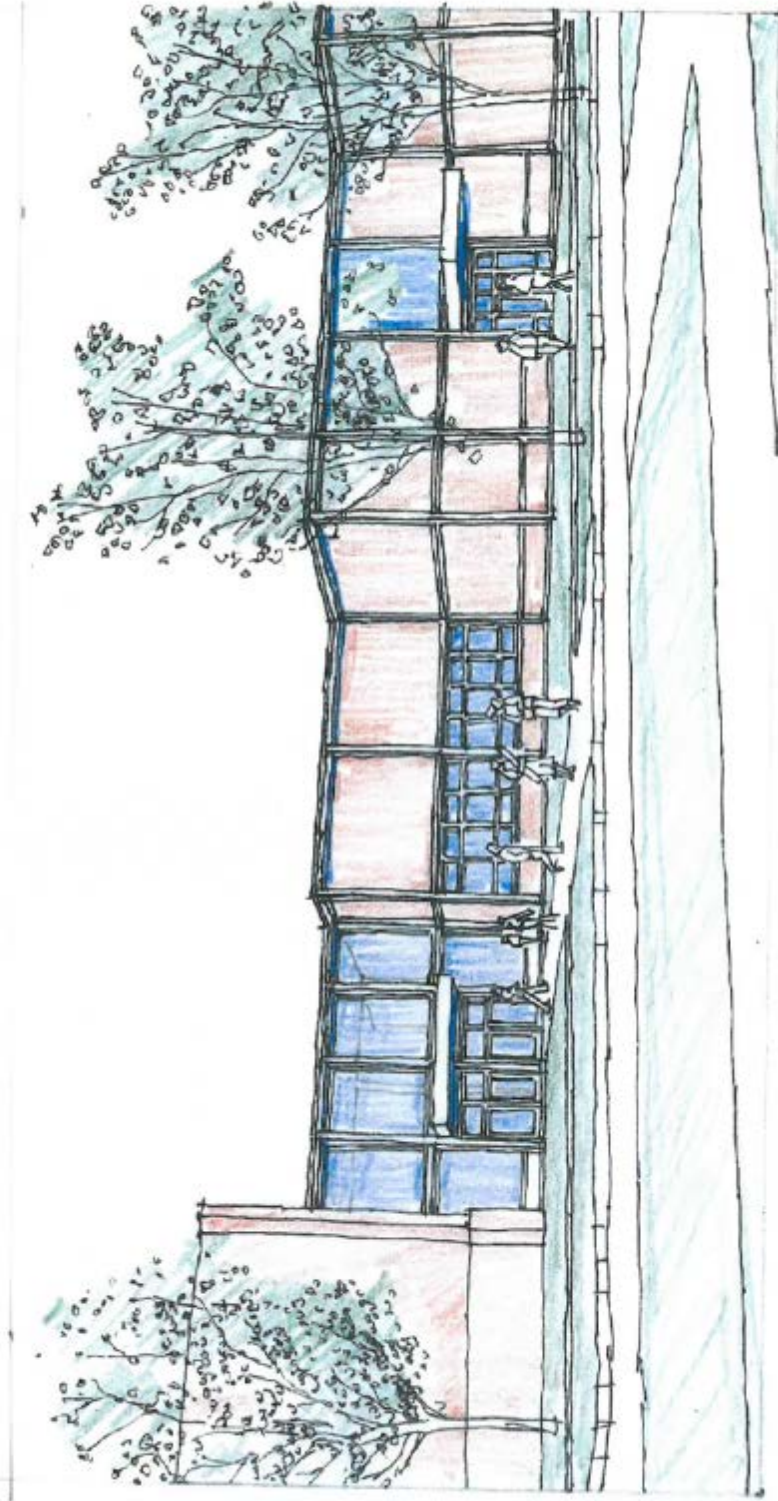
- Leave our neighbourhood alone.
- Save highlands and modernize
- Highlands Concept # 2 is the best solution as it keeps the original Highlands School intact and not crowded by new construction on both sides. The new addition is located to the rear of the original school making it compatible, distinguishable and subordinate to the beautiful historic Highlands School.
- I need more information before I can answer Question 12 but needed to put an answer to submit the survey. I need more info on the use of space at Highlands. Where are the lower grades compared upper grades? Are there art, music and drama rooms in the Highlands concept? Are there playgrounds in both? Will Mount Royal mean relocation of students currently there for a few years?
- I think the second one give us more green space.
- I appreciate that this amalgamation project is being done to modernize my children's school. It is important to me that my children continue to be in an Arts Core school so I also appreciate that the new schools will be Arts Core. I also like it that they would continue to be in the same school when one is in junior high and one is in elementary. Then my younger child will no longer have to attend out-of-school care because the older one can take care of him before and after school.

Highlands School Modernization Concept 2

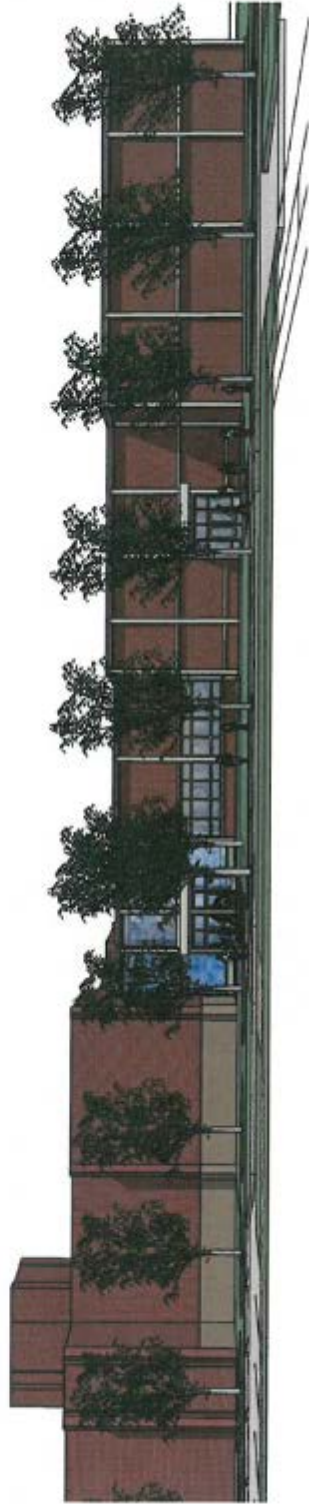


- Modernization and addition*
- Create a K-9 Arts Program School at Highlands School site
- Consolidate students from Highlands, Montrose and Mount Royal schools at the modernized Highlands K-9 school
- Close Mount Royal and Montrose schools
- Demolish both the 1954 addition and free-standing annex
 - Phased construction may be considered; however, temporary relocation of students during construction may be necessary

*All designs are at the conceptual stage; this project is currently unfunded. Detailed design work would begin once funding was announced and a budget determined.



Highlands School Modernization Concept 2 – 1/7

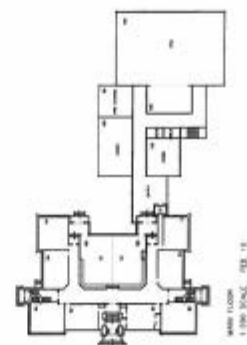
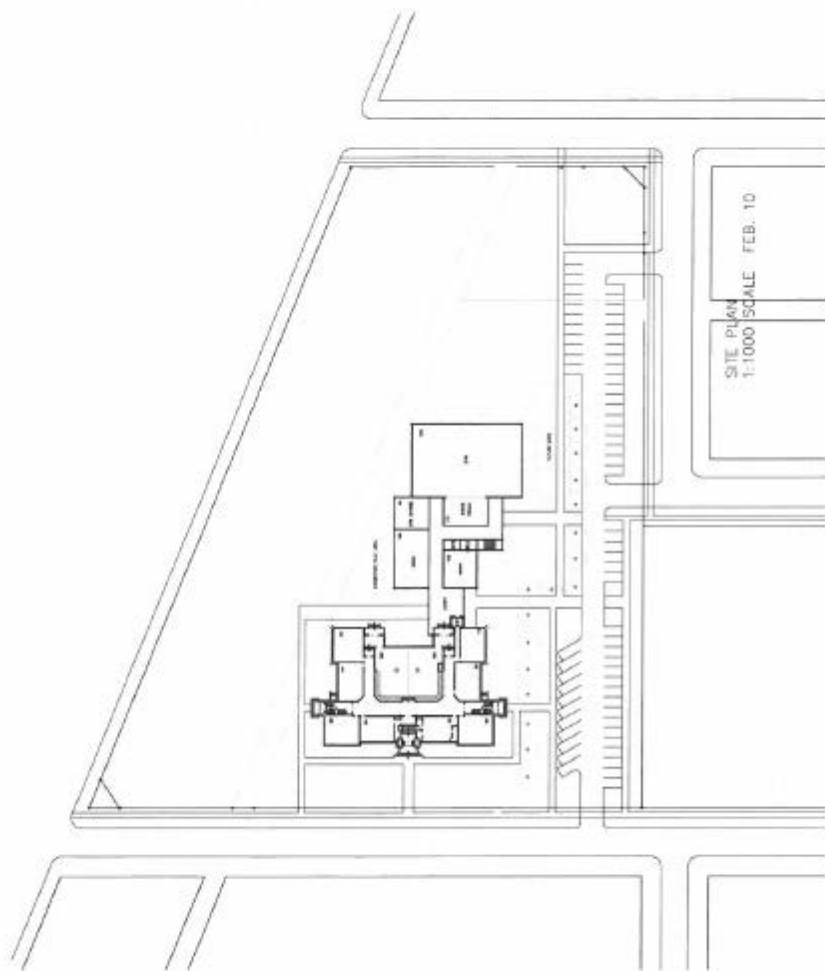


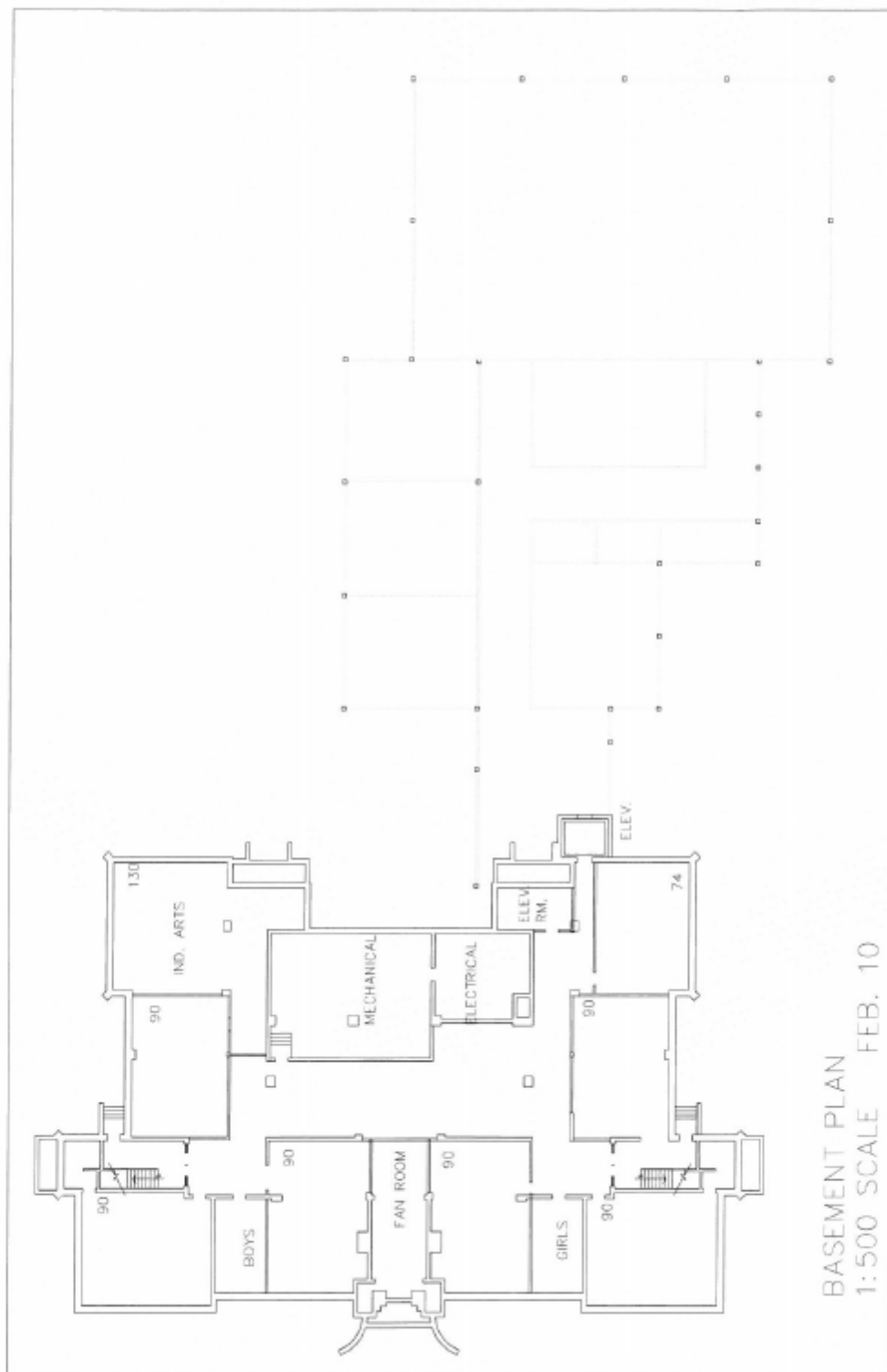
2

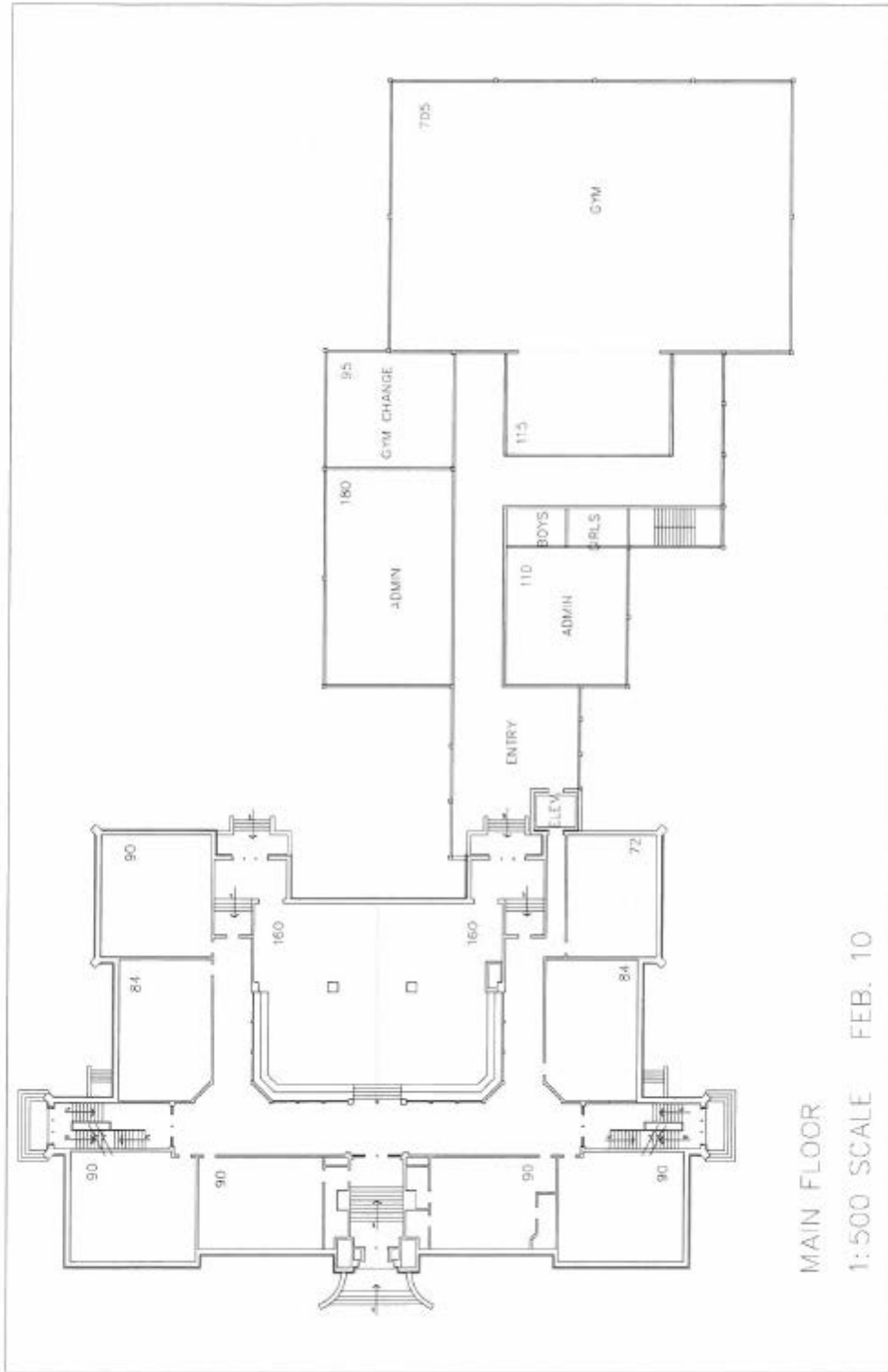


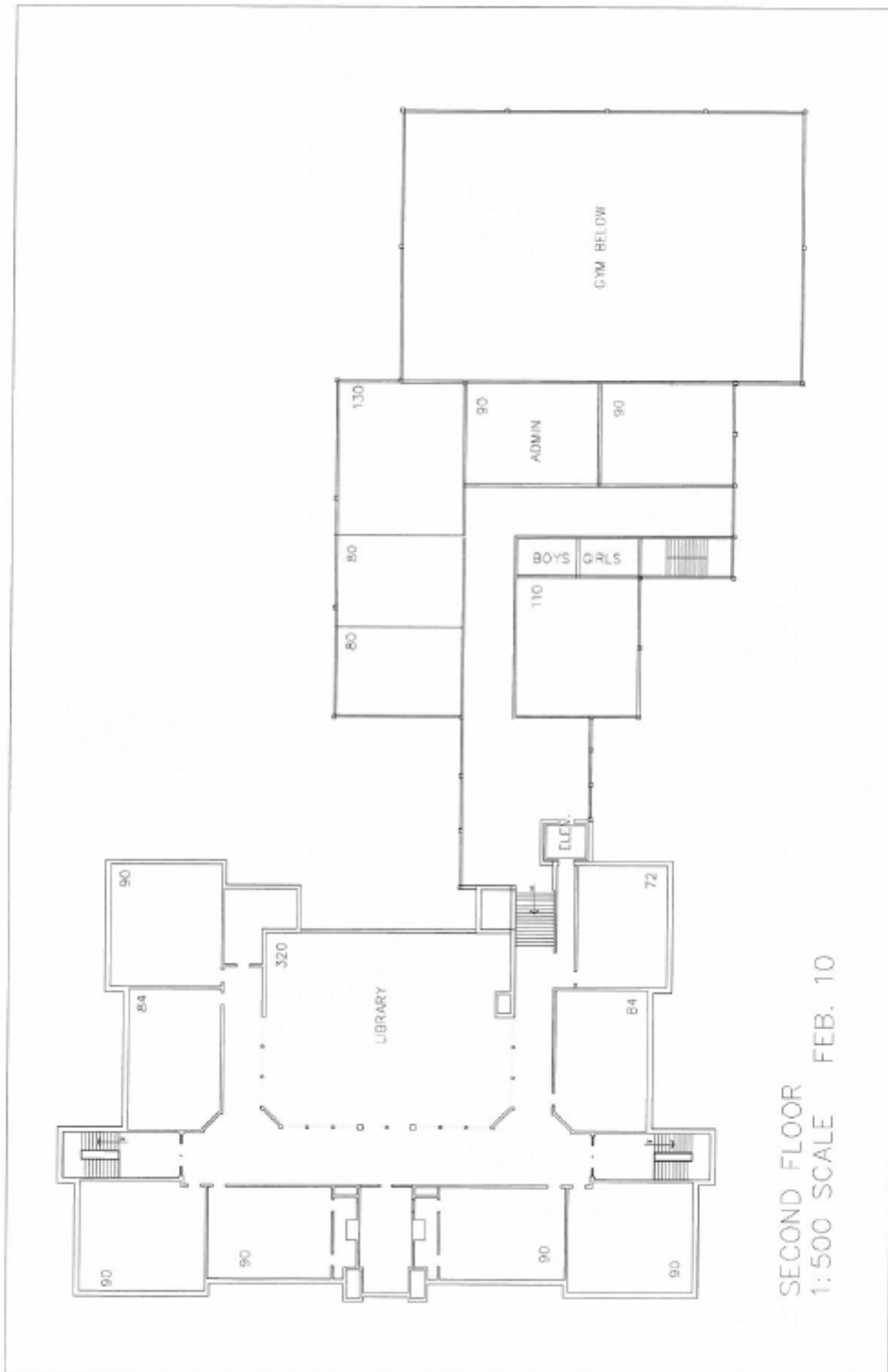


3











Office of the Minister



JUL 31 2015

AR90134

Mr. Michael Janz
Board Chair
Edmonton Public Schools
Centre for Education
One Kingsway
Edmonton AB T5H 4G9

Dear Mr. Janz:

Thank you for your June 26, 2015 letter following up on our June 19, 2015 meeting, where you outlined your public consultation process regarding potential options for schools in the Greater Highlands area.

I appreciate receiving the documentation outlining the extensive consultation process with the school communities from Montrose, Mount Royal and Highlands related to a possible consolidation of students into a modernized Highlands School. The letter and the attached background information indicate that through engagement with the community, Edmonton Public Schools' administration has received strong community support for the proposed Highlands School Concept 2. I note that Edmonton Public's current highest capital priority is a request for either a replacement school or a modernization and addition to the existing Highlands School, pending a decision by the board of trustees. When the board of trustees formally approves a preferred approach and revision to your three-year capital plan, please ensure that you notify me and Honourable Brian Mason, Minister of Infrastructure.

I understand you intend to ask for an exemption from Sections 4 to 7 of the *Closure of Schools Regulation* (238/97), pursuant to Section 1.2(2), if funding is provided by the provincial government for a modernized Kindergarten to Grade 9 Highlands School. As you are aware, the regulation makes provisions for school boards to be exempted from the requirements outlined in Sections 4 to 7 "if the Minister is satisfied that the board has consulted with the community regarding any change in grades and programs in one or more schools operated by the board." I look forward to receiving your request for this exemption related to the closure of Montrose and Mount Royal schools based on the consultations you have undertaken since April 2014 and any subsequent school community, general public and other relevant stakeholder engagements at the time any funding is announced.

I wish your school board the best as you continue with school capital planning in the Greater Highlands area.

Sincerely,

David Eggen
Minister

cc: Honourable Brian Mason, Minister of Infrastructure
228 Legislature Building, 10800 - 97 Avenue, Edmonton, Alberta T5K 2B6 Canada Telephone 780-427-5010 Fax 780-427-5018