

# How we distribute education funding to schools

## Education funding at a glance

### Education funding in Alberta comes from the provincial government.

Like every child, each school is *unique*. Edmonton Public Schools distributes the funding to schools based on the number of students, learning needs, and other factors like building operations.

## School fees and fundraising



Families may be charged **school fees** for items or services related to enhancing educational experiences. The province's *School Fees Regulation* outlines the types of fees schools can and cannot charge. School fees make up 2.3% of the Division's total annual revenue.

Many schools fundraise for special initiatives or events at a school. **Fundraising** is carried out with a specific purpose in mind for any funds raised.

**14.7%**

### Operations and maintenance

- school building maintenance and repairs
- utility costs
- insurance
- custodial services

**4.2%**

### Student transportation

- funding to transport students to schools

**2.8%**

### Board and system administration

- Board of Trustees and related expenses
- administration includes costs associated with the operations of the Division, such as software licences, and legal and financial services

**77.2%**

### Instruction

- salaries of school staff, including teachers, support staff and administration
- supplies and materials for teaching
- support for new provincial curriculum



**1.1%**

### External services

(offset by related revenue)

- school cafeteria
- community use of schools
- continuing education programs

# How education funding flows to schools

Funding comes from the province, and the Division distributes it to schools based on a number of factors, including:

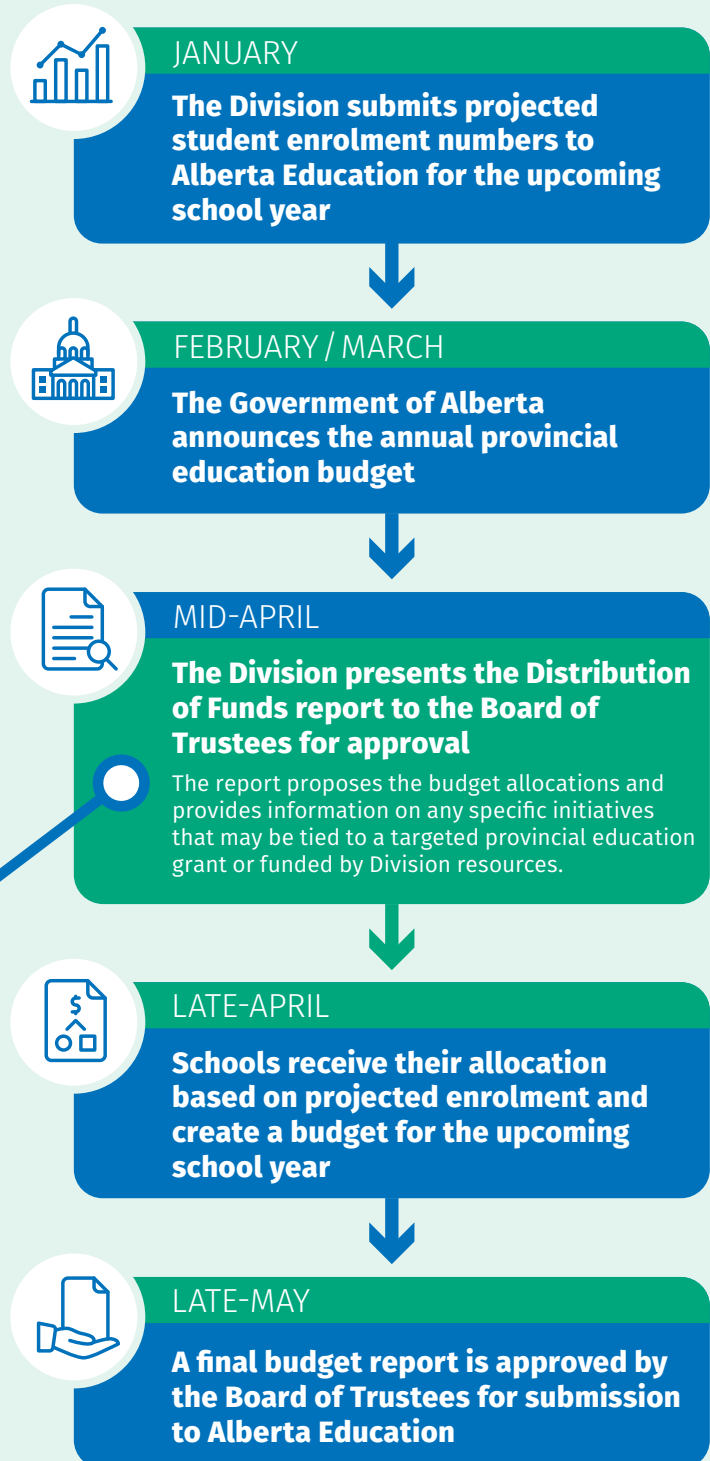
- ✓ **number of students at a school**
- ✓ **students who require specialized learning supports**
- ✓ **supports for newcomers to Canada**
- ✓ **social vulnerability of the overall school population**
- ✓ **supports for First Nations, Métis, and Inuit students and initiatives**

The Division's budget aligns with the priorities set out in the **2022–26 Strategic Plan**:

- build on outstanding learning opportunities for all students
- advance action towards anti-racism and reconciliation
- promote a comprehensive approach to student and staff well-being and mental health

Learn more about the 2022–26 Strategic Plan on [epsb.ca](https://www.epsb.ca).

## How it happens



Visit [epsb.ca/ourdistrict/budget](https://www.epsb.ca/ourdistrict/budget) for more information.